

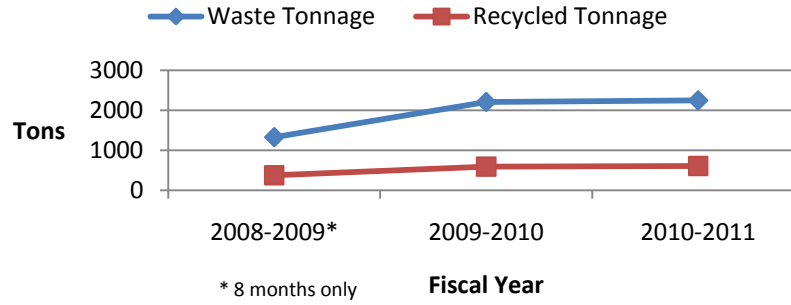
**BRIDGTON**

**ANNUALLY**

Fiscal Year	Waste Tonnage	Recycled Tonnage	Percent Recycled
<b>Totals</b>			
2008-2009*	1325	376	22%
2009-2010	2209	588	21%
2010-2011	2250	605	21%

\* 8 months only

**Bridgton: Tonnage**

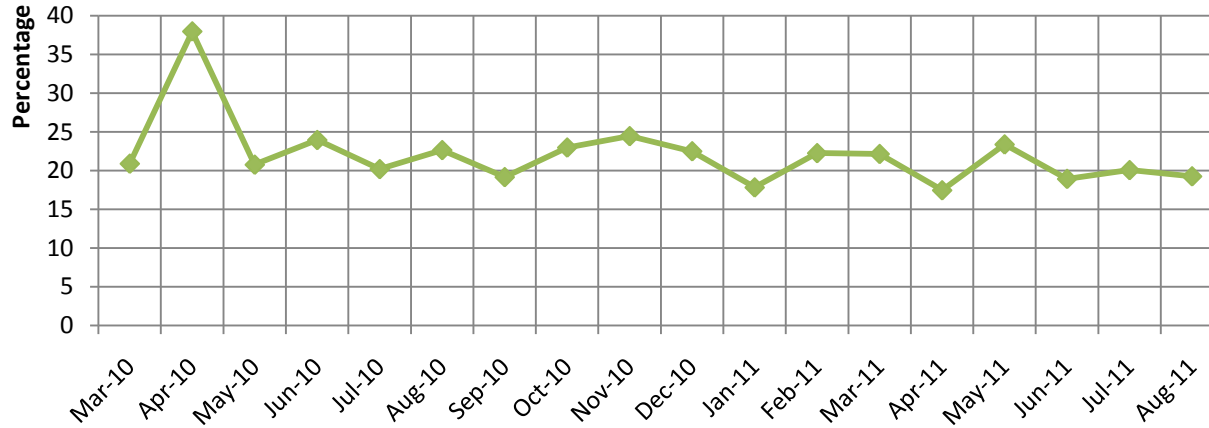


\* 8 months only

**MONTHLY**

FY 2009-10	% Recycled
Mar-10	20.89
Apr-10	37.94
May-10	20.76
Jun-10	23.94
Jul-10	20.19
Aug-10	22.64
Sep-10	19.16
Oct-10	22.97
Nov-10	24.44
Dec-10	22.49
Jan-11	17.83
Feb-11	22.25
Mar-11	22.14
Apr-11	17.46
May-11	23.37
Jun-11	18.93
Jul-11	20.06
Aug-11	19.26

**Bridgton: Percent Recycled**



*Figures shown are approximate.*