

BRIDGTON

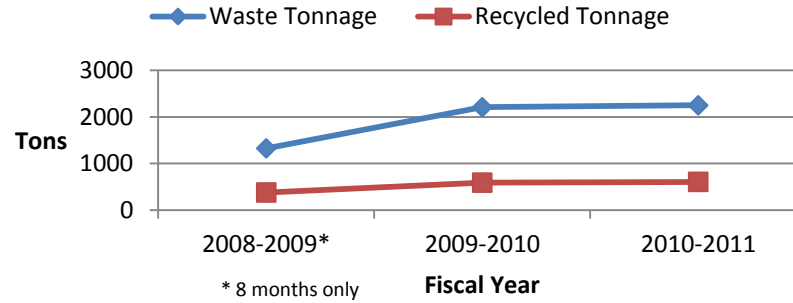
ANNUALLY

**Fiscal Year
Totals**

* 8 months only

	Waste Tonnage	Recycled Tonnage	Percent Recycled
2008-2009*	1325	376	22%
2009-2010	2209	588	21%
2010-2011	2250	605	21%

Bridgton: Tonnage



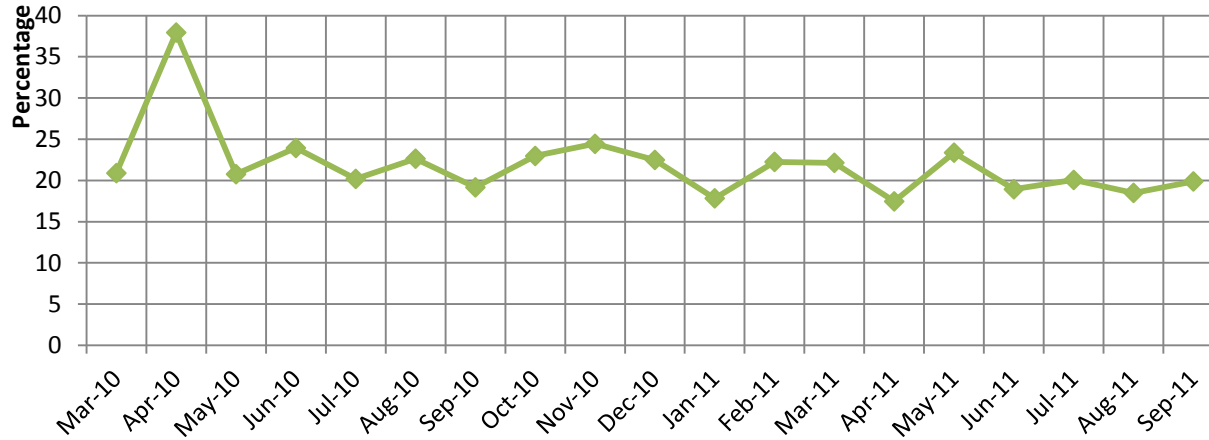
MONTHLY

FY 2009-10

**%
Recycled**

Month	% Recycled
Mar-10	20.89
Apr-10	37.94
May-10	20.76
Jun-10	23.94
Jul-10	20.19
Aug-10	22.64
Sep-10	19.16
Oct-10	22.97
Nov-10	24.44
Dec-10	22.49
Jan-11	17.83
Feb-11	22.25
Mar-11	22.14
Apr-11	17.46
May-11	23.37
Jun-11	18.93
Jul-11	20.06
Aug-11	18.49
Sep-11	19.88

Bridgton: Percent Recycled



Figures shown are approximate.