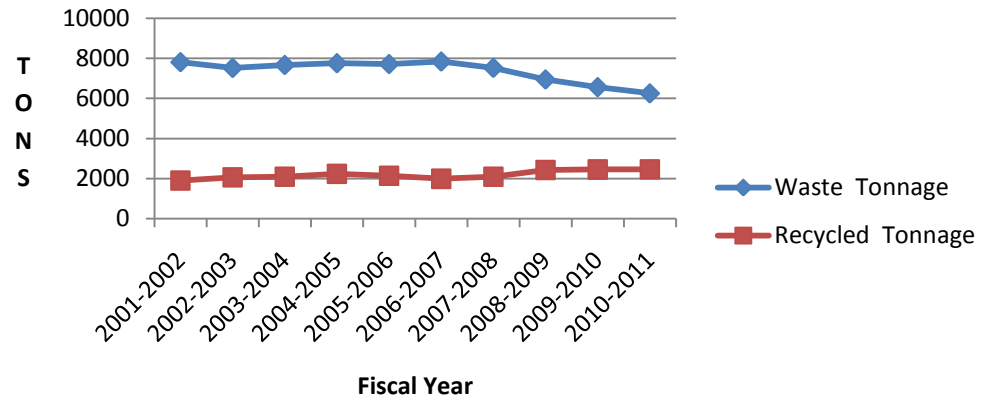


SOUTH PORTLAND

ANNUALLY

| Fiscal Year Totals | Waste Tonnage | Recycled Tonnage | Percent Recycled |
|--------------------|---------------|------------------|------------------|
| 2001-2002 | 7808 | 1902 | 19% |
| 2002-2003 | 7519 | 2059 | 21% |
| 2003-2004 | 7666 | 2100 | 21% |
| 2004-2005 | 7754 | 2239 | 22% |
| 2005-2006 | 7713 | 2146 | 21% |
| 2006-2007 | 7838 | 1995 | 20% |
| 2007-2008 | 7524 | 2092 | 21% |
| 2008-2009 | 6946 | 2427 | 25% |
| 2009-2010 | 6564 | 2457 | 27% |
| 2010-2011 | 6253 | 2461 | 28% |

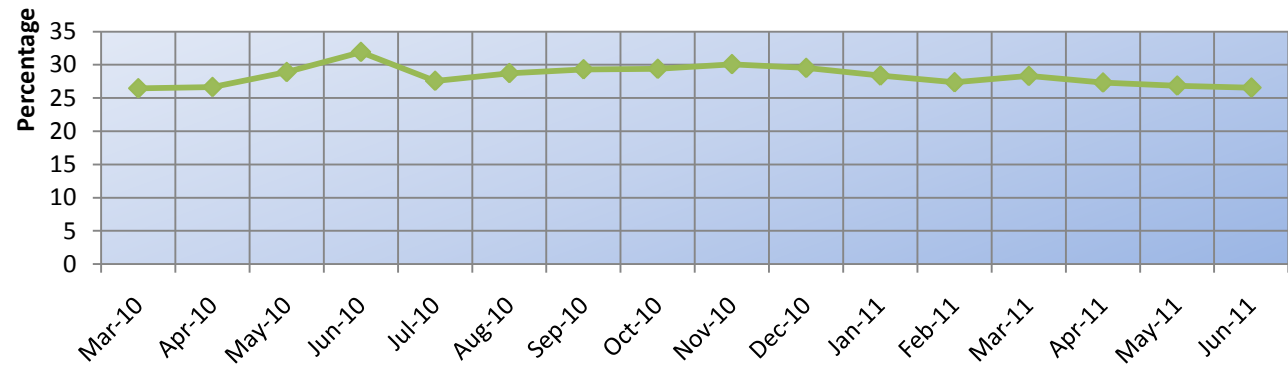
South Portland: Tonnage



MONTHLY

| FY 2009-10 Month | % Recycled |
|------------------|------------|
| Mar-10 | 26.46 |
| Apr-10 | 26.65 |
| May-10 | 28.90 |
| Jun-10 | 31.92 |
| Jul-10 | 27.58 |
| Aug-10 | 28.74 |
| Sep-10 | 29.31 |
| Oct-10 | 29.38 |
| Nov-10 | 30.09 |
| Dec-10 | 29.52 |
| Jan-11 | 28.36 |
| Feb-11 | 27.36 |
| Mar-11 | 28.31 |
| Apr-11 | 27.32 |
| May-11 | 26.86 |
| Jun-11 | 26.56 |

South Portland: Percent Recycled



Figures shown are approximate.

