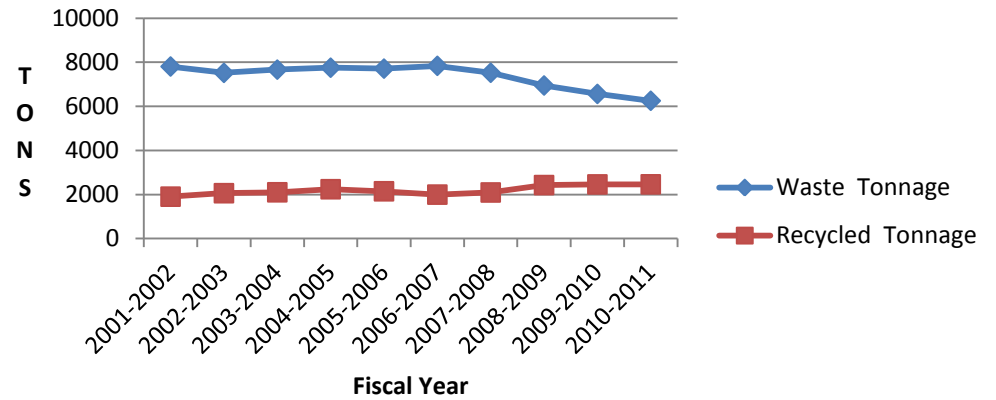


**SOUTH PORTLAND**

**ANNUALLY**

Fiscal Year Totals	Waste Tonnage	Recycled Tonnage	Percent Recycled
2001-2002	7808	1902	19%
2002-2003	7519	2059	21%
2003-2004	7666	2100	21%
2004-2005	7754	2239	22%
2005-2006	7713	2146	21%
2006-2007	7838	1995	20%
2007-2008	7524	2092	21%
2008-2009	6946	2427	25%
2009-2010	6564	2457	27%
2010-2011	6253	2461	28%

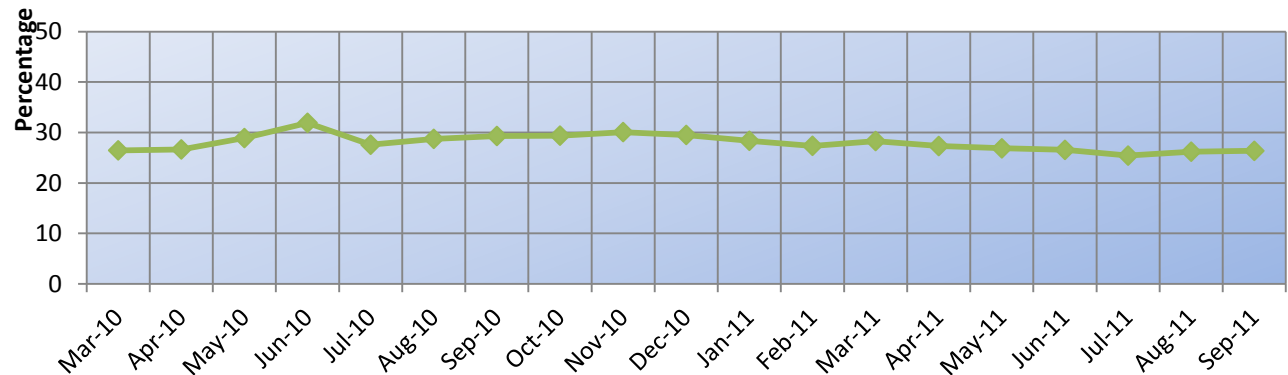
**South Portland: Tonnage**



**MONTHLY**

FY 2009-10 Month	% Recycled
Mar-10	26.46
Apr-10	26.65
May-10	28.90
Jun-10	31.92
Jul-10	27.58
Aug-10	28.74
Sep-10	29.31
Oct-10	29.38
Nov-10	30.09
Dec-10	29.52
Jan-11	28.36
Feb-11	27.36
Mar-11	28.31
Apr-11	27.32
May-11	26.86
Jun-11	26.56
Jul-11	25.42
Aug-11	26.20
Sep-11	26.36

**South Portland: Percent Recycled**



*Figures shown are approximate.*

