

A Message from General Manager Kevin H. Roche

Fiscal year 2008-2009 came with serious challenges, primarily due to declining municipal waste tonnage, a nationwide waste-generation downturn, and a dramatic drop in the value of recyclable materials. As a result, revenues are projected to be approximately \$520,000 less than budgeted. I am pleased, however, to report that the ingenuity and hard work of **ecomaine's** staff and board of directors has allowed the organization to end this year *under* budget.

To bring the budget into balance in the midst of a changed market, difficult choices began in December, the half-way point of our fiscal year, with cuts totaling \$818,143. These cuts were made through realized savings of under-budget bids from contractors, by temporarily storing **ecomaine's** by-pass waste at our own landfill (for future use as waste-to-energy fuel), lowering contingency funding, and eliminating or delaying low impact items. With no real change predicted for the state of the economy, both union and exempt staff have graciously agreed to stationary pay for the coming fiscal year.

The board provided innovative leadership for their municipalities in these financially challenging times by requesting a pilot program for regional waste and recycling pick-up services. Three communities have worked together relentlessly to forge a new type of service agreement with the intention of reducing expenses. The board has also addressed the serious issue of municipal waste diversion by creating a model ordinance that towns may use as a resource in tackling the problem.

The board's trust in **ecomaine's** staff has allowed us to be nimble in responding to our competition and to the changing market: short term contracts for recycling and/or waste, fees for guaranteed minimum waste deliveries, and the development of new tipping fee categories.

Outreach to the public continues to be important to the success of **ecomaine's** operation and, so, we have hosted several events: a recycling open house, green symposium, biodiesel forum, eco-Excellence Award program, and on-going tours of all our facilities. In addition, our continually

improving Web site (ecomaine.org) provides resources and access to many categories of useful information.

We continue to face a troubling mercury-intake problem, as do all like facilities, but we have made progress in understanding its sources by sponsoring a feasibility study on mercury control and research to identify the sources. Our mercury reduction plan has led to proposed legislation that would enable **ecomaine** to meet mercury emission limits by measuring a 90% mercury reduction efficiency as an alternative to a total pounds per year limit.

In further efforts to make ourselves more efficient and financially sound, **ecomaine** has signed a contract with all involved parties to accept ownership of the 1.4 miles of “force main” sewer line that connects our landfill pump station to the Portland Water District interceptor. As a result of the agreement, we are no longer required to perform the expensive pre-treatment of leachate; in fact, we have been able to completely retire our pre-treatment facility. More efficiencies are being realized in boiler availability at the waste-to-energy plant through a change in our method of handling fly ash. And, upgrading **ecomaine**’s communications system, though still underway, is already bringing benefits from a new accounting package.

ecomaine has successfully met the challenges that came with this fiscal year; we are ready for the challenges - and the opportunities - that lay ahead.

Sincerely,



Kevin H. Roche
General Manager

*This FY 2009 Annual Report was printed on
100% post-consumer recycled paper - as
are all **ecomaine** documents.*

MISSION STATEMENT

To manage solid waste in the most economically and ecologically sound manner possible

OBJECTIVES:

1. To communicate effectively with our member communities and their constituents.
2. To meet or exceed the needs of our **ecomaine** customers.
3. To provide our employees with training to be proficient in their fields, to challenge our employees to achieve peak performance, to keep our employees safe, and to instill pride in **ecomaine**.
4. Operations:
 - To operate our waste-to-energy plant at more than 90 percent availability, to produce more than 100 million kilowatt hours of electricity per year, and to reduce the volume of waste received by 90 percent before landfill disposal.
 - To maximize the capacity of our recycling facility with more than 25,000 tons per year through raising consumer awareness and by making it easy to participate.
 - To manage our ashfill, recycling operation, and waste-to-energy plant in ways that maximize the protection of our environment.
5. To maintain ISO 14001 certification for our waste-to-energy plant, recycling and our ashfill/landfill facility and to demonstrate our commitment to excellence in environmental management.

Board of Directors



**Anthony Plante, Board Chair
Windham**



**Michael Bobinsky, Vice Chair
Portland**



**Michael McGovern, Treasurer
Cape Elizabeth**



**Gary Foster, Secretary
Gray**

Bridgton

Mahlon Johnson



Cumberland

Susan McGinty



Cape Elizabeth

Penny Jordan



Falmouth

Bonny Rodden



Michael McGovern



Freeport

Rod Reiger



Casco

David Morton



Gorham

Noah Miner



Gray

Gary Foster



Harrison

Bradley Plante



Hollis

Len Van Gaasbeek



Limington

Dennis Doughty



Lyman

Maurice St. Clair



North Yarmouth

Richard Brobst



Ogunquit

John Miller



Portland

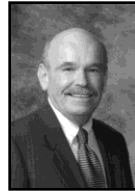
John Anton



Michael Bobinsky



Joseph Gray



Nicholas Mavodones



Troy Moon



Pownal

Alan Bradstreet



Scarborough

Karen D'Andrea



Michael Shaw



South Portland

Linda Boudreau



James Gailey



Patricia Smith



Waterboro

Willis Lord



Windham

Anthony Plante



Yarmouth

Erving Bickford



Associate Member Municipalities

- Andover
- Baldwin
- Cornish
- Hiram
- Manchester
- Monmouth
- Naples
- Old Orchard Beach
- Parsonsfield
- Poland
- Porter
- Readfield
- Saco
- Sanford
- Standish
- Wayne



General Manager: Kevin H. Roche

EXECUTIVE COMMITTEE

District	Municipalities	Representative	Alternate
1	Bridgton, Casco, Gray, Harrison	Gary Foster	Mahlon Johnson
2	Hollis, Limington, Lyman, Ogunquit, Waterboro	John Miller	Len Van Gaasbeek
3	Gorham, Windham	Anthony Plante, Chairman	Noah Miner
4	Cumberland, Freeport, North Yarmouth, Pownal, Yarmouth	Rod Regier	Richard Brobst
5	Cape Elizabeth, Falmouth	Michael McGovern	Bonny Rodden
Portland		Troy Moon Michael Bobinsky	Joseph Gray Joseph Gray
Scarborough		Michael Shaw	Karen D'Andrea
South Portland		Linda Boudreau	James Gailey

AUDIT COMMITTEE

Chairman: Gary Foster
Michael Bobinsky, Joseph Gray, Susan McGinty, David Morton, Len Van Gaasbeek

FINANCE COMMITTEE

Chairman: Michael McGovern
David Cole, Susan McGinty, John Miller, Rod Regier, Maurice St. Clair, Len Van Gaasbeek

RECYCLING COMMITTEE

Chairman: Troy Moon
Richard Brobst, Penny Jordan, Willis Lord, Susan McGinty, John Miller, Bonny Rodden, Patricia Smith, Len Van Gaasbeek, Travis Wagner, Sarah Wojcoski

Finance

BUDGET HIGHLIGHTS

	Projected FY 2008-2009	Budget FY 2009-2010	Change
Revenues	\$26,197,694	\$24,515,679	<\$1,682,015>
Expenses	\$14,365,359	\$14,401,633	\$122,524
Debt Service	\$10,332,694	\$11,804,900	\$1,472,206

- Spending for capital improvements is projected to be \$2,055,000 for FY 2008-2009 and is budgeted to be \$1,746,000 for FY 2009-2010.
- The budget for fiscal year (FY) 2009-2010 was approved by the Board of Directors on April 16, 2009; no increase in assessments from member communities was requested.

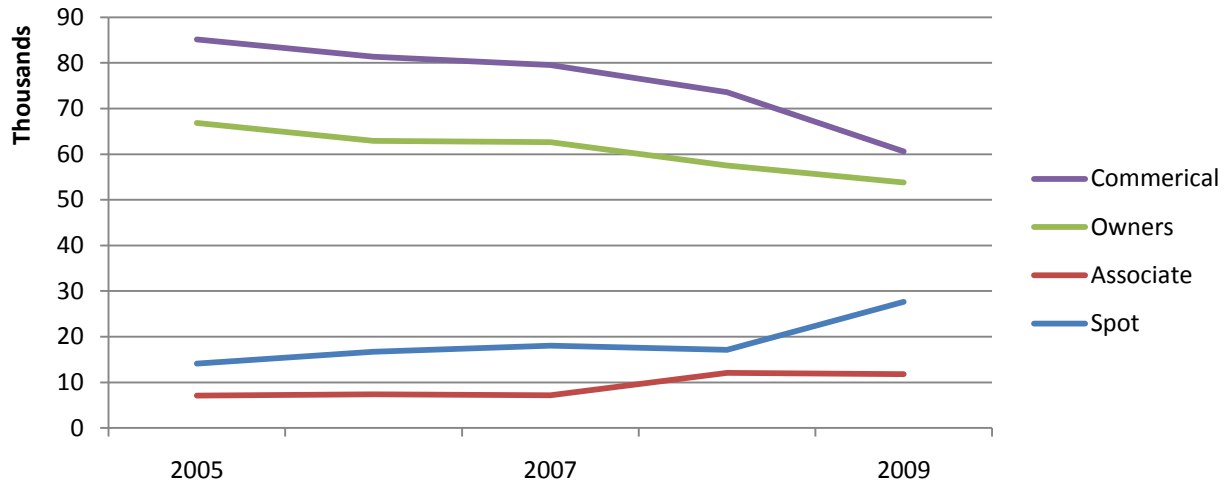
LONG TERM DEBT AND DEBT SERVICE

Fiscal Year	Debt Service	Total Bonds Outstanding
2008-09	\$10,332,694	\$31,350,000
2009-10	\$11,804,900	\$21,090,000
2010-11	\$11,146,546	\$10,640,000
2011-12	\$6,938,743	\$4,010,000
2012-13	\$4,053,857	\$585,000
2013-14	\$309,000	\$300,000
2014-15	\$300,000	\$0

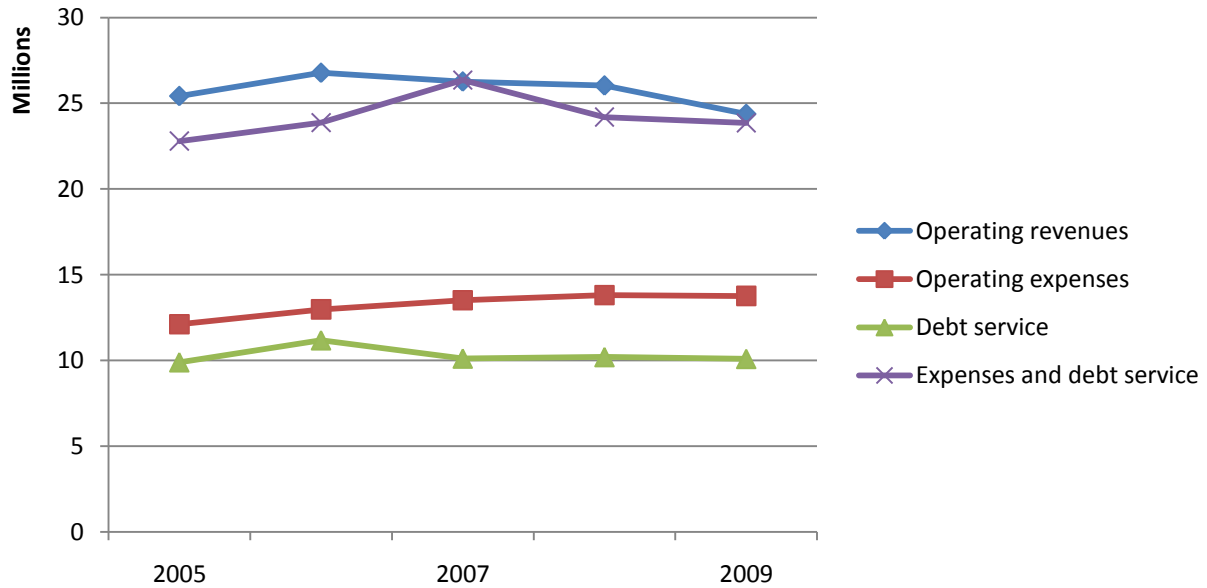
FINANCE ACTIVITIES

- The Finance Committee has directed the successful implementation of new accounting software and system enhancements to provide efficiencies within the organization.
- The Audit Committee has been reviewing ecomaine's internal controls and will oversee the annual audit process.
- Eric Doane was hired in January as the Director of Finance and Administration, to replace a retiring Rocco Marzilli.

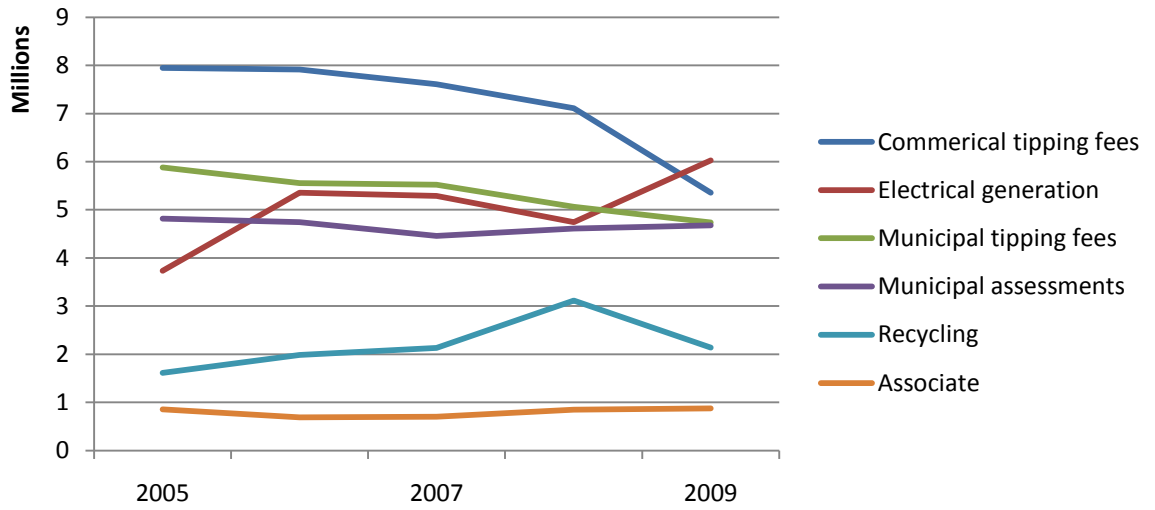
Waste Tonnage 2005 - 2009



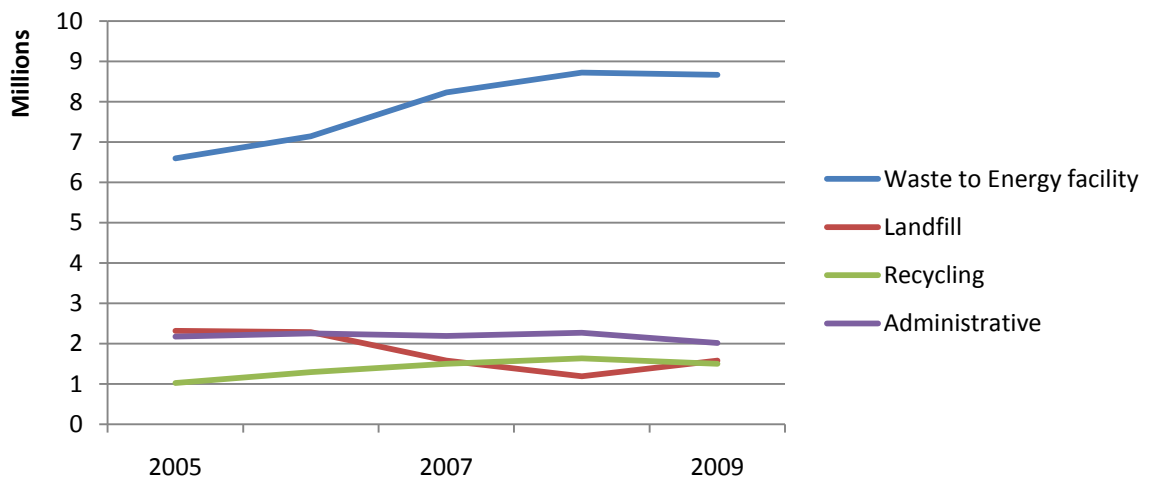
Revenues, Expenses and Debt Service



Operating Revenues 2005 - 2009



Operating Expenses 2005 - 2009



Administration

STAFF

- **ecomaine** (WTE, recycling facility, and landfill) operates with 71 full-time staff, as shown below:

Full-Time Staff
Capital Projects Supervisor (1)
Chief Engineer (1)
Communications Specialist (1)
Custodian (1)
Director of Finance (1)
Electrician (1)
Environmental Management (1)
Environmental Specialist (1)
Equipment Operators (6)
General Manager (1)
Instrument & Controls (2)
Landfill Manager (1)
Landfill Supervisor (1)
Landfill Residual Disposal (1)
Landfill Operator (1)
Maintenance Superintendent (1)
Maintenance Supervisor (1)
Mechanics (7)
Office Manager (1)
Office Secretary/ Receptionist (1)
Office Bookkeeper (1)
Operations Safety Supervisor (1)
Plant Operators (4)
Recycling Manager (1)
Recycling Program Development Manager (1)
Recycling Coordinator (1)
Recycling Sorters (8)
Relief Operator (1)
Scale House Attendants (2)
Shift Supervisors (4)
Utility Operators (4)
Truck Drivers (4)
Warehouse (2)

HEALTH & SAFETY

- **ecomaine** has an aggressive safety program that has resulted in measurable improvement over the last five years. Employee representatives from each sector of the operation are elected by their fellow workers to serve on the Health & Safety Committee, which meets monthly to recommend policy changes, institute new safety measures, enforce and/or reward safety behaviors, track and evaluate results. Team safety rewards include quarterly luncheons and gift certificates.
- All five Shift Supervisors are ASME qualified Resource Operators and have completed their site-specific qualifications. One of the plant's five Operation Shift Supervisors is responsible for employee safety and training; he is an OSHA certified trainer for general industry, a licensed Maine first class stationary engineer and an ASME qualified resources operator.
- **ecomaine** received the Safety and Health Award for Public Employers (SHAPE) Award in 2008, which will be valid until 2010. As a consequence, **ecomaine** became exempt from regularly scheduled inspections by the Maine Department of Labor's Bureau of Labor Standards. The award recognizes public sector employers who maintain an exemplary safety and health management system; the SHAPE Award is an achievement that recognizes an organization as a model for workplace safety and health.
- Employees are provided with annual health screenings, along with mandatory Medical Surveillance testing, such as respiratory and blood and urine analysis. We work closely with our worker's compensation insurance provider in setting new objectives and providing appropriate training. A proactive "Wellness Works" profile is made available to any employee who chooses to participate; this confidential evaluation includes a written summary and individualized action steps suggested for improved health.
- **ecomaine** managers are required to conduct formal employee training at least twice-monthly and to keep detailed records of attendance. Training sessions are in many forms (written information, oral information, hands-on experience, inspections, tours, and quizzes) and are also used to assess deficiencies which would trigger further safety training.

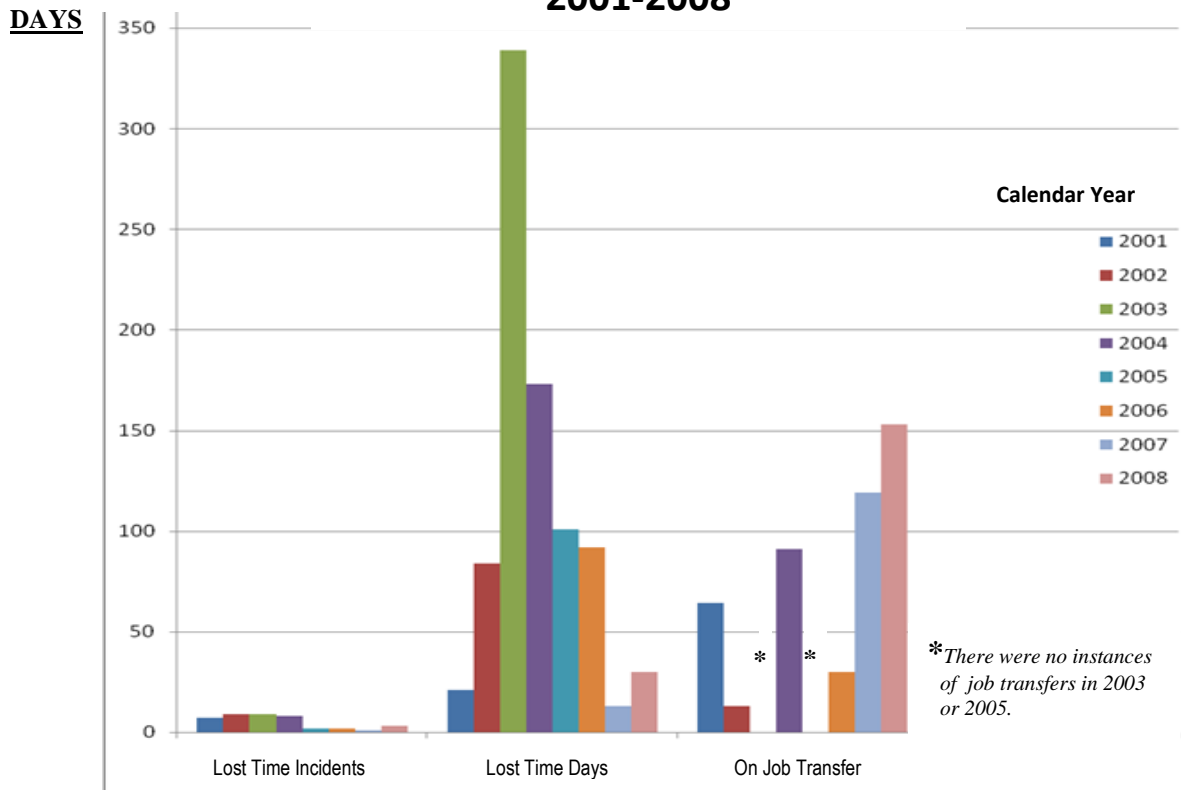
- **ecomaine** employees are trained annually in the following areas:
 - Confined Space Entry & Rescue
 - Lockout & Tagout Procedures
 - Blood-borne Pathogens
 - Respiratory Protection
 - AED Training (three facilities)
 - Fire Impairment Procedures
 - Hazard Communication Procedures
 - Basic Safety Procedures
 - Good Housekeeping
 - Electrical Safety
 - Evacuation Procedure
 - Injury Response Procedures
 - Personal Protective Equipment
 - Hearing & Noise Conservation
 - Maine DOT's Defensive Driver Course
 - Lead & Cadmium Overexposure
 - Fall Protection

And many employees are tested for the following:

- Air (lead and cadmium exposure)
- Noise (hearing protection)
- Evacuation (employee readiness)
- Fire System (alarm, sprinkler & suppression systems)

- The OSHA Work-Related Injury Report documents our improvement in lost time incidents and our improvement in providing Job Transfer to employees who have a work-related injury. The following chart (below) reflects the successful results experienced by **ecomaine** from 2001 through 2008.

OSHA Work-Related Injury Report 2001-2008



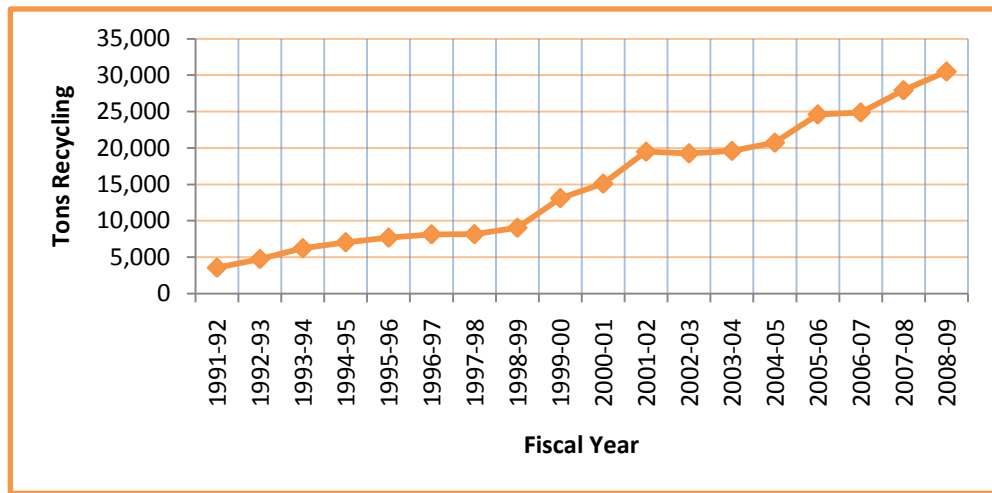
- Contractor safety is also important and it is clearly stated in each contract bid that **ecomaine** may use a sub-contractor's safety record and safety programs as a means to determine the final award. Winning contractors are issued **ecomaine**'s own Contractor Safety CD or, if they prefer, they can watch the presentation on **ecomaine**'s Web site; each of the contractor's employees who will be working at one of **ecomaine**'s facilities must sign a document stating that he/she viewed the CD and attest to their knowledge of **ecomaine**'s safety procedures.

Recycling

TONNAGE

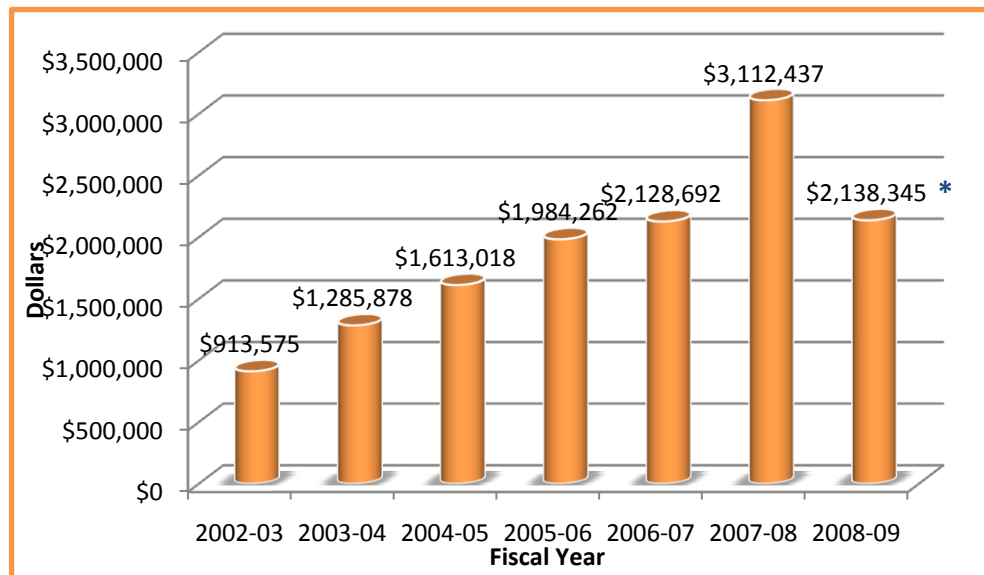
- Recycling is projected to reach and surpass 30,000 tons by the close of the fiscal year, setting a new record for **ecomaine**.
- Two other recycling records broken this year were:
 - Most tons in one month – 2986 in December 2008
 - Most tons processed in one day – 207 on December 29, 2008

Recycling: Annual Tons



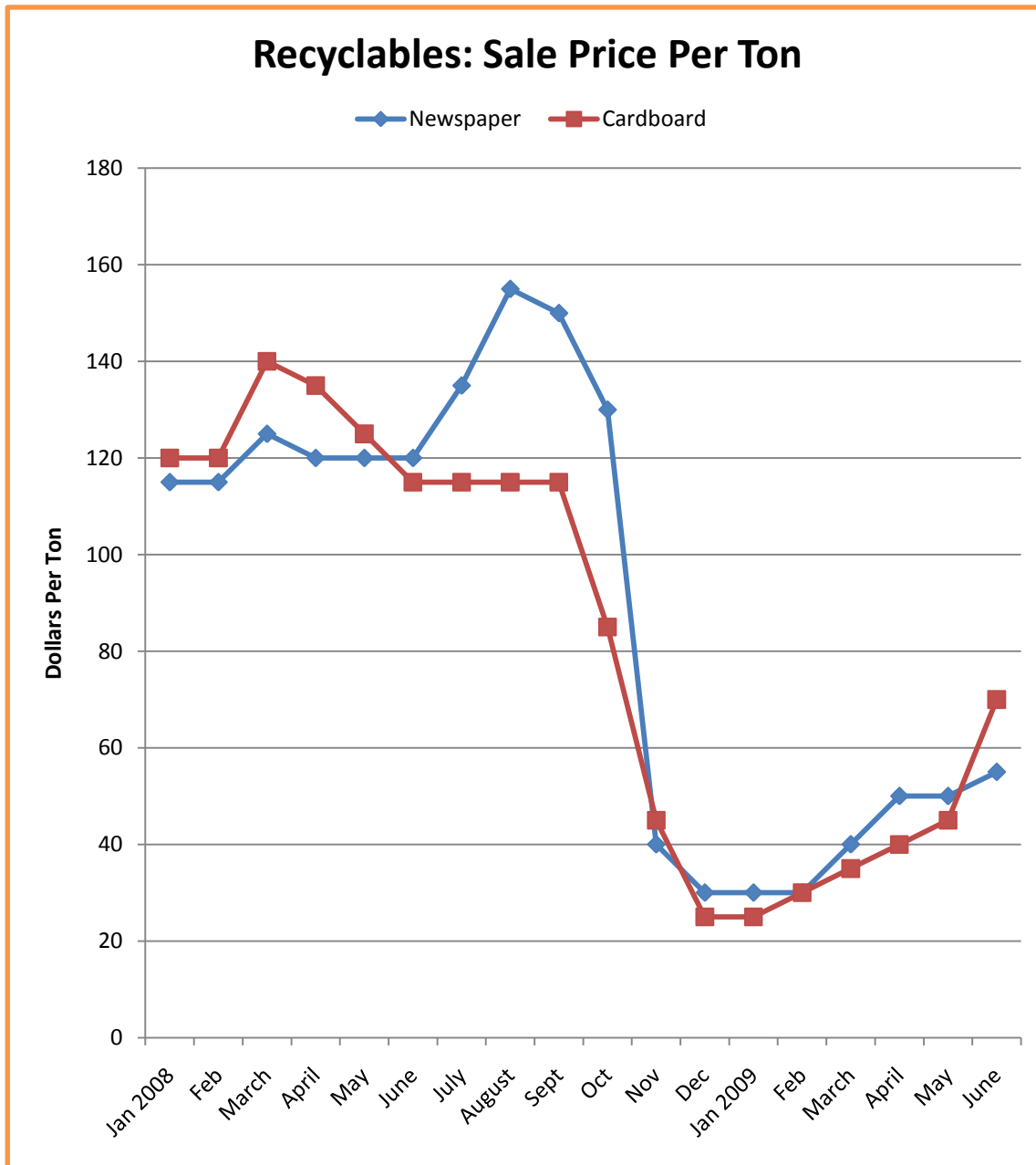
REVENUE

Recycling: Annual Revenues

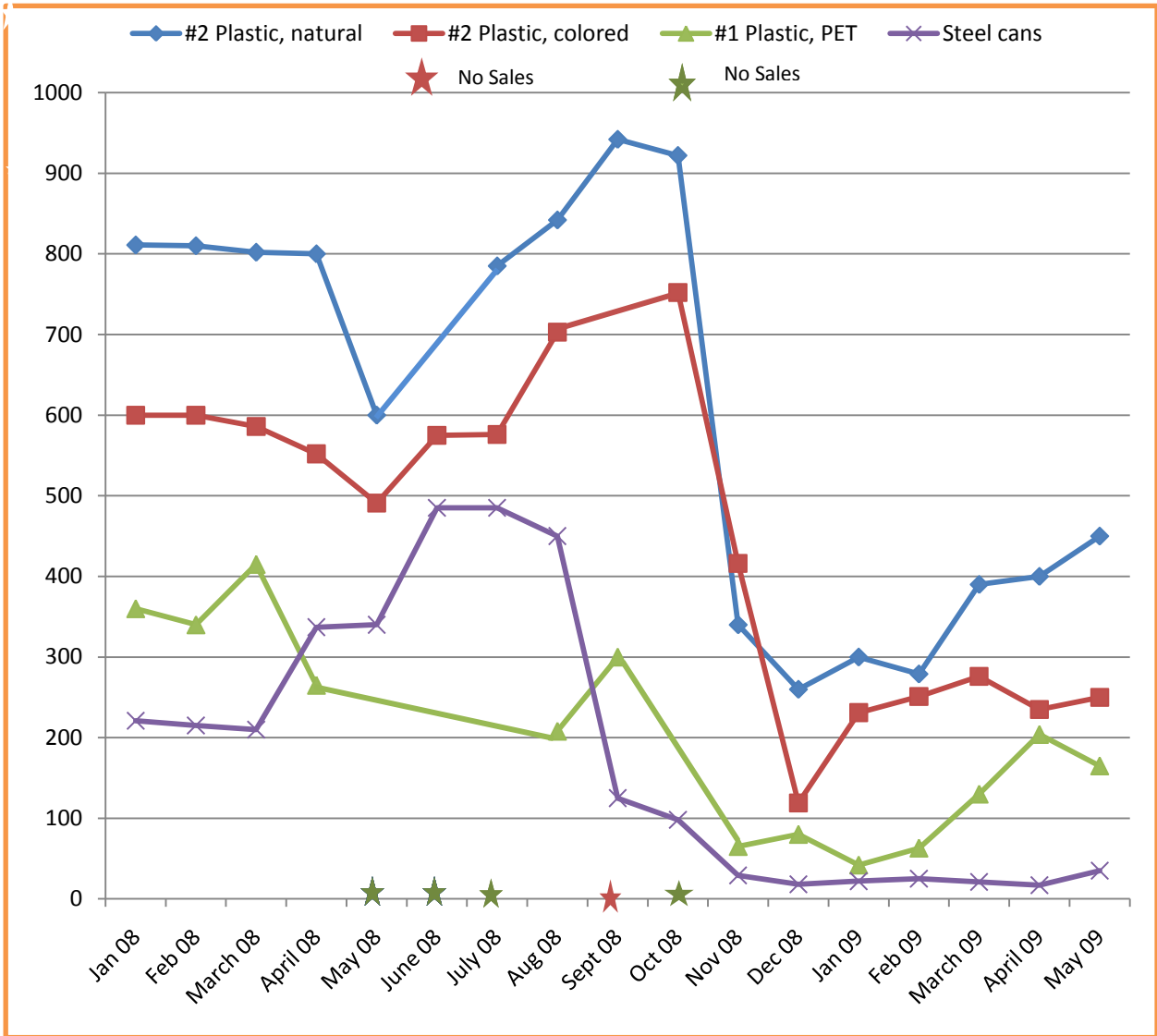


* projected

- The market value of recycled materials dropped dramatically in October 2008 due to worldwide economic problems, but because **ecomaine** had sold a lot of material at high prices during the first three months of the fiscal year, the drop in year-end revenue was minimized. Beginning in February 2009, market prices have slowly begun to rise again. (Please see two charts, below.)



Recyclables: Sale Price Per Ton for Plastics & Steel Cans



COMMUNITY OUTREACH & GROWTH

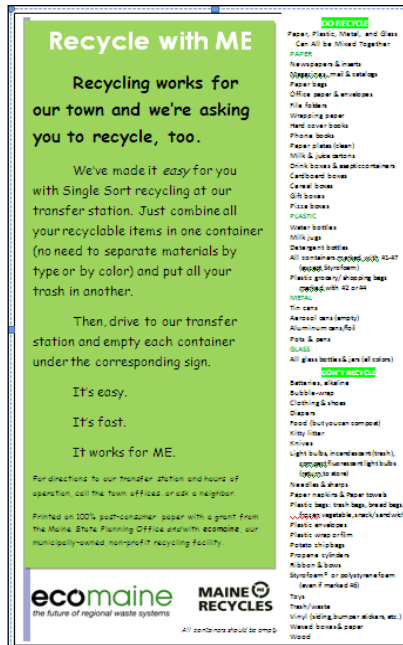
- Five additional municipalities - with a total population of 43,000 - signed recycling contracts this fiscal year:
 - Andover
 - Bridgton
 - Manchester
 - Old Orchard Beach
 - Readfield/Wayne
 - Sanford

- **ecomaine** applied for and was awarded a \$1,000 matching grant from the Maine State Planning Office. **ecomaine's** plan was to design and execute a recycling awareness campaign for summer residents. **ecomaine's** owner communities with large summer populations and transfer stations were asked if they would like to participate and two were chosen: Harrison and Ogunquit. The towns shared 12,000 information cards,

20 posters, and 140 **ecomaine** recycling bins; results will be tracked all summer. (Please see sample, left.)



Information card (front) and poster



Information card (back)

- As a result of our strategic review last year, a shared-services pilot program was developed for two communities that hire outside contractors for waste and recycling collection. The goal of this program is to lower municipal costs through the economy of scale. Bids will be received and considered in June 2009.

- A recycling “open house” was held for the public in Late September and, though not as well attended as last year’s event, attracted more than 100 people who might not otherwise have learned about single sort recycling.

Open House: After a tour of single sort recycling, people visited exhibits and demonstrations under a tent (right).



- ➔ Thousands of information cards have been distributed as one part of **ecomaine's** recycling education program. (Please see two-sided card, below.)

ecomaine

DO RECYCLE

**PAPER, PLASTIC, METAL,
AND GLASS CAN ALL BE
MIXED TOGETHER.**

PAPER

- Newspapers & Inserts
- Magazines
- Mail & Catalogs
- Paper Bags
- Office Paper & Envelopes
- File Folders
- Wrapping Paper
- Phone Books
- Hard Cover Books
- Paper Plates (clean)
- Milk & Juice Cartons
- Drink Boxes & Aseptic Containers
- Cardboard Boxes
- Cereal Boxes
- Gift Boxes
- Pizza Boxes

PLASTIC

- Water Bottles
- Milk Jugs
- Detergent Bottles
- All containers marked with a #1-#7 (except Styrofoam)
- Plastic Grocery/ Shopping Bags marked with #2 or #4

METAL

- Tin Cans
- Aerosol Cans (empty)
- Aluminum Cans/Foil
- Pots & Pans

GLASS

- All glass Bottles & Jars (all colors)

All containers should be empty.

DON'T RECYCLE

Batteries, alkaline
Bubble-wrap
Clothing & shoes
Diapers
Envelopes that are plastic or Tyvek®
Food (but you can compost it!)
Kitty litter
Knives
Light bulbs, incandescent (trash), compact fluorescent light bulbs (return to store)
Needles & sharps
Paper napkins
Paper towels
Plastic bags:

- bread bags
- frozen vegetable
- snack/sandwich
- trash bags

Plastic wrap or film
Potato chip bags
Propane cylinders
Ribbon & bows
Styrofoam® or polystyrene foam (even if marked #6)
Toys
Trash/waste
Vinyl (siding, bumper stickers, etc.)
Waxed boxes & paper
Wood

Also see hazardous waste information on the back



For more information go to www.ecomaine.org or call us at 773-1738.

Printed on 100% post-consumer recycled paper.

Hazardous Waste

Items categorized as "hazardous waste" must be disposed of carefully and cannot be included with your trash or with single-sort recycling. However, area transfer stations and recycling centers often offer programs to take this kind of waste. For more information:

- Visit www.ecomaine.org
- Call ecomaine at 773-1738
- Call your town office

Examples of hazardous waste:

- * Ammunition
- * Anti-freeze
- * Button-cell batteries
- * CFL light bulbs (compact fluorescent lights)
- * Chemicals
- * Computers & related parts
- * Fertilizers
- * Fluorescent bulbs (of any kind)
- * Fuel
- * Mercury (in any amount)
- * Oxygen tanks
- * Paint thinner
- * Pesticides
- * Propane tanks
- * Rechargeable batteries
- * TVs

For more information, go to www.ecomaine.org or call us at 773-1738.

ecomaine

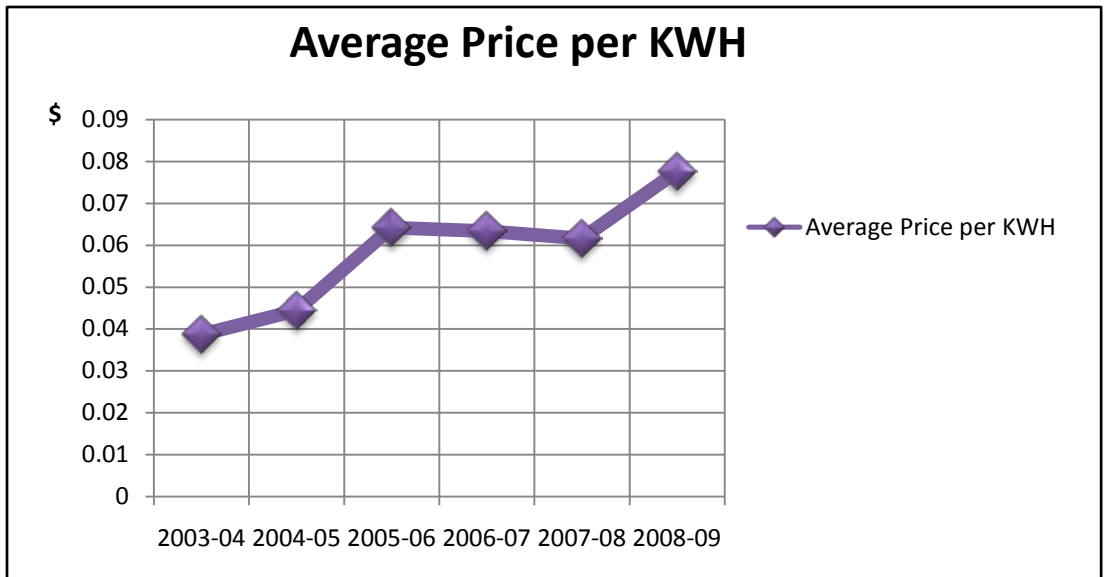
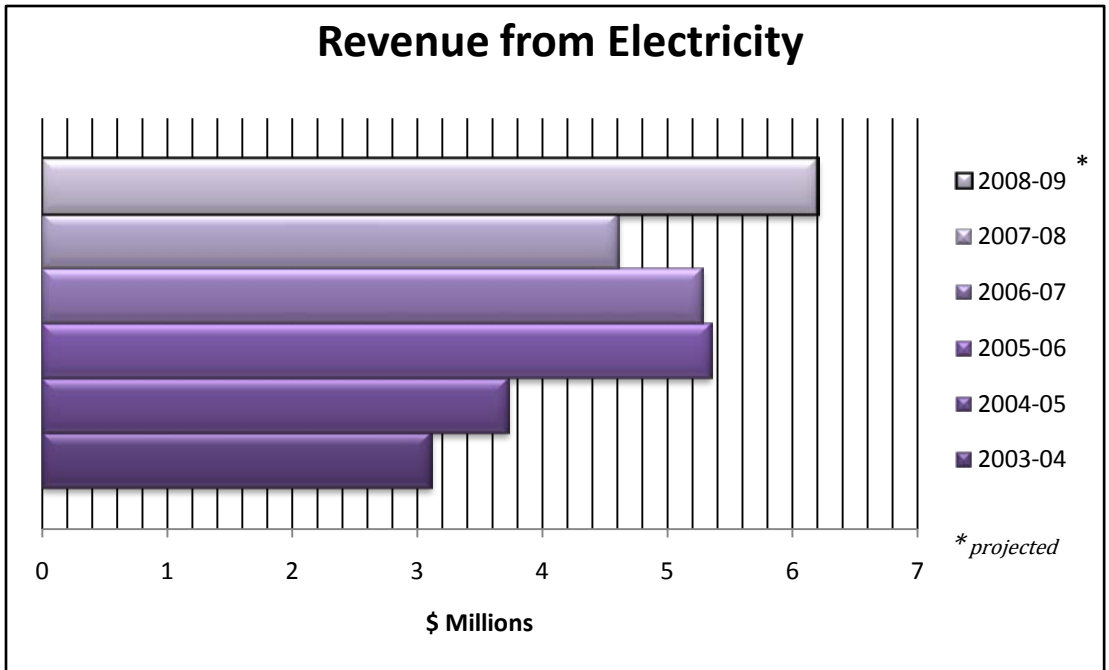
the future of regional waste systems

Printed on 100% post-consumer recycled paper.

Waste-To-Energy

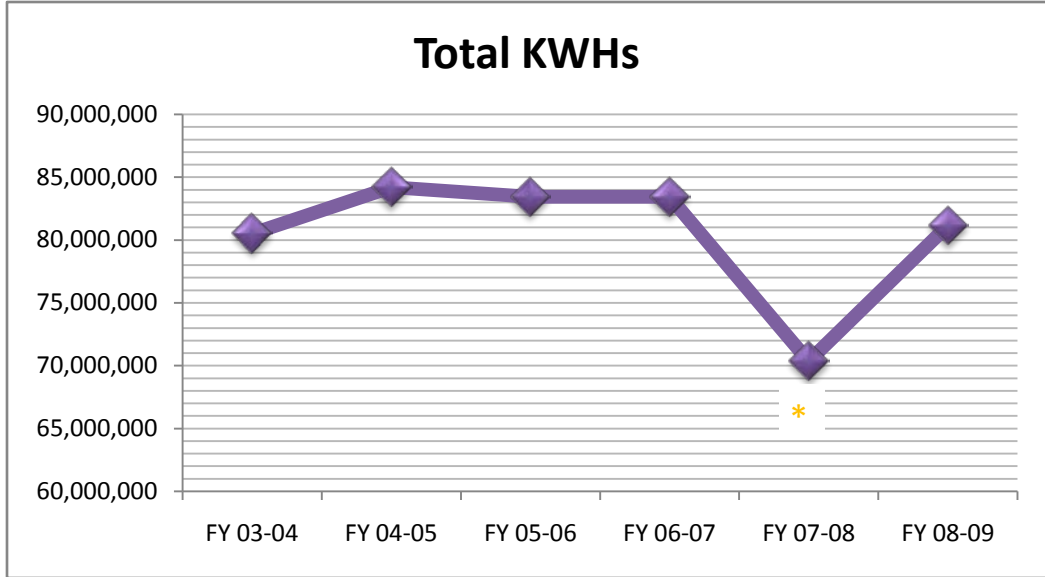
REVENUES

Revenue from the sale of electricity is projected to be \$6,200,000 for FY 2008-2009, which is more than twice the amount earned just five years ago.



- Approximately 85% of the electricity produced is sold, under contract, to Integrys and about 15% is consumed by **ecomaine** for operation of its WTE and recycling facilities.
- On average, **ecomaine** produces in excess of 82,000 megawatt hours of electricity every year, which is enough to power more than 11,000 homes.

* (Right)
 In FY 2008, the turbine generator rotor was removed, inspected and cleaned as part of its required maintenance schedule; therefore, there was no electrical production for 48 days.

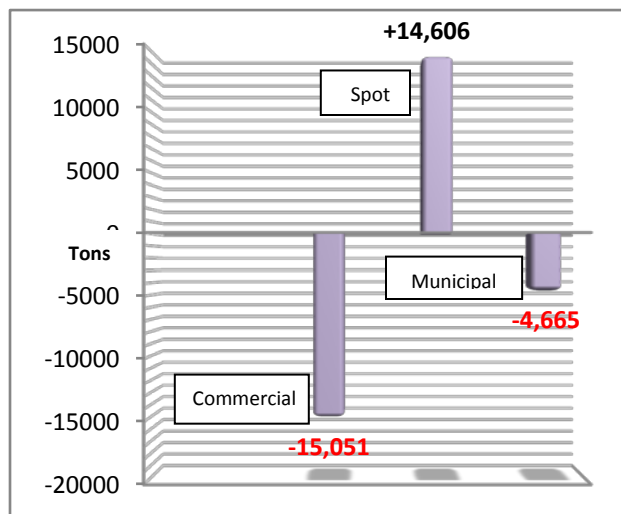


WASTE VOLUME

- **ecomaine** projects that the total amount of waste processed in FY 2008-2009 to create electricity will be 159,423 tons. That is 6,425 tons less than last year (FY 2007-2008) and 13,535 tons less than FY 2006-2007. Compared to the five-year average tonnage (YTD at April 2008), commercial tonnage is down 15,051 tons, spot tons are up by 14,606 tons, and municipal waste is down 4,665 tons.

FY 2008-2009 Tonnages Compared to 5-Year Averages (YTD 4/30/09)

- Our member communities have delivered fewer tons of both commercial and residential waste to **ecomaine** over the last two years. **ecomaine** has replaced these tons with tons generated from outside our service area (called "spot" tonnage). Although **ecomaine** has been able to replace tons, spot tons are brought in at lower value and have resulted in lower than projected revenues.



- **ecomaine** stored 2,388 tons of unburned trash at its landfill/ashfill during the Spring 2008 annual maintenance shutdown and, then, excavated 5,538 tons of trash to use as waste-to-energy fuel during February and March, 2009. This operation has allowed **ecomaine** to maximize its revenues during the summer months, when the price per ton is highest, and use the waste for additional fuel during the leaner winter months. Savings come from not having to pay for transporting by-pass trash and from reclaiming valuable landfill space.

MAINTENANCE

- The scheduled maintenance shutdown (outage) took 24 days to complete this year and at a cost of \$1.3 million for boiler repairs and improvements. Crews are at work 24 hours a day, every day until the job is finished. The work scope of work accomplished included the installation of 3.5 miles of superheater tubes and 2,500 welds. The shutdown maintenance done in FY 2007-2008 also required removal and upkeep of the turbine generator (done at five to seven-year intervals) in addition to the usual repair work; there were 42 fewer days without generation.



Left: Gas burner diffuser before repairs

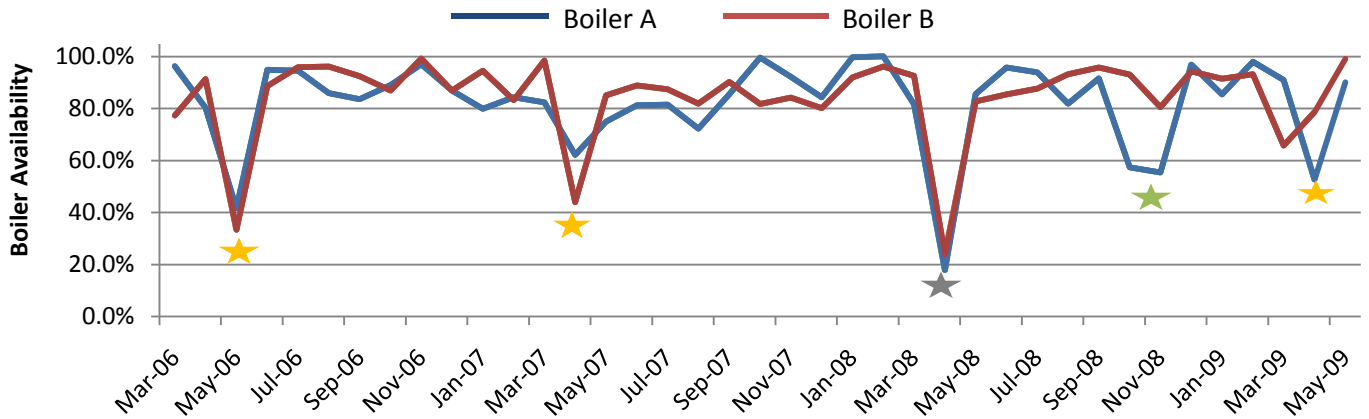


Right: Overhauling a 34,500-volt electrical switch gear



Inconel-protected superheater tubes and headers being lowered to installation location.

Boiler Availability Percentages 3/06 - 5/09



★ Annual maintenance shutdown ★ Annual maintenance shutdown with generator maintenance ★ Unscheduled superheater tube replacement

ACCOMPLISHMENTS

- As a result of our strategic review last year, a shared-services pilot program was developed for two communities that hire outside contractors for waste and recycling collection. The goal of this program is to lower municipal costs through the economy of scale. Bids will be received and considered in June 2009.
- **ecomaine** was very proud to have its waste-to-energy operation win the Facility Recognition Award from the American Society of Mechanical Engineers in a national competition. A special luncheon and celebration was held for **ecomaine** employees was held in honor of this accomplishment.
- September 2008 marked the 20th anniversary of the waste-to-energy plant's opening for operation. A special luncheon and celebration for **ecomaine** employees was held in honor of this accomplishment.

Landfill/ Ashfill

TRASH STORAGE

- Trash, which is fuel for the waste-to-energy plant, was not readily available in New England this winter. During February and March, the most difficult time, **ecomaine** solved the shortage by excavating 3,150 tons of baled trash from 1992 and another 2,388 tons of trash that had been stored at the landfill in 2008 during the annual maintenance outage. As a result, the waste-to-energy plant continued to operate without interruption and valuable landfill/ashfill space was reclaimed for future use.
- Excavation of interim cover from the ashfill was completed in late October, 2008, which created unanticipated available space. As a consequence, use of the ashfill expansion (constructed in 2006) can be delayed until mid-summer of 2009.



Ryan Mankowski, intern, surveyed sites at the landfill/ashfill.

- Landfill staff constructed a temporary trash-storage bunker (see photo, below) for the purpose of storing clean, dry and easily accessible fuel for the waste-to-energy plant. The bunker, which measures 150 feet by 200 feet and is eight feet deep, became the receptacle for 1,150 tons of waste during the March-April maintenance outage. The landfill staff has also collected and stored 3,500 tons of various types of combustible material to use as a protective cover over the stored trash. This cover material will keep the trash protected for its future use as fuel.



The temporary trash-storage bunker

LEACHATE

- In November, 2008, RTD Enterprises of Madison, Maine, covered 3.84 acres of ash with heavy plastic membrane. The newly covered area will reduce the amount of leachate generated from a one- inch rainfall by 76,000 gallons and save about \$1000 in water treatment costs. The total area now covered by plastic membrane is 14.5 acres, and leaves six acres uncovered.
- Negotiations for a new sewer agreement with the City of Portland and the Portland Water District were completed in January, 2009, and, as a result, ecomaine assumed ownership and maintenance responsibilities for approximately 8,000 feet of sewer force-main. The agreement allows ecomaine to better manage its leachate disposal and to end the pre-treatment of landfill leachate prior to discharge into the sewer system. The pre-treatment facility was formally decommissioned in February, 2009.

- In September 2008 ecomaine retained the Ted Berry Co., Inc. of Livermore, Maine, to clean and visually inspect leachate collection and transport piping system and



the eight- inch force-main, which connects to the City of Portland's sewer system. Additional cleaning included ecomaine's pumping station wet wells and 3.5 million gallon leachate lagoon.

Residuals Disposal Technician Bruce Sanford inspected the empty leachate lagoon.

ASH

- Between September 22nd and 30th, the landfill staff conducted a test on 1199.59 tons ash from the waste-to-energy ash to determine the percentage of additional ferrous metal that might be separated by screening and further magnetic separation (Please see photo, right). Results showed that an additional 9% ferrous metal, which has market value, might be separated from the ash.



A pile of charred metal (foreground) accumulated as ash was hand-sorted and, as shown here, screened.

- During the past year, 42,500 tons of ash was delivered to the landfill/ashfill.

OTHER NEWS

- Landfill Manager Tom Raymond earned the Solid Waste Association of North America's Landfill Manager Certification.
- Landfill employees have worked 1,490 days (more than four years) without a loss-time accident.

Environment

ECOLOGICAL STEWARDSHIP

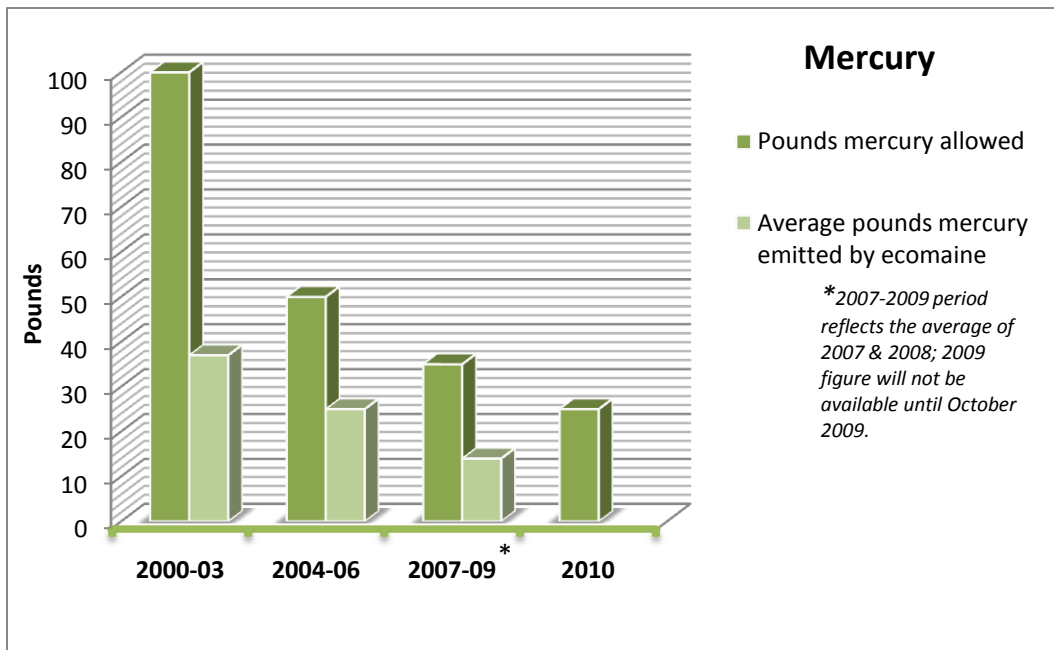
- **ecomaine** continues to be an industry leader in environmental stewardship as evidenced by the continued re-certification of ISO 14001 at all three facilities (the waste-to-energy plant, recycling center and ashfill/landfill). This is a rare achievement. Twice a year, the Registrar from ISO (International Organization for Standardization) of Geneva, Switzerland conducts a rigorous audit of the Environmental Management System (EMS). **ecomaine** originally received its ISO 14001 certification for the waste-to-energy plant and the recycling facility in 2002, and for the landfill/ashfill in 2007.



To celebrate years of ISO 14001 certification, ecomaine obtained a flag, which can be seen every day at the waste-to-energy/administration building. (L-R General Manager Kevin Roche, Environmental Manager Anne Hewes, Equipment Operator Scott Greenleaf, Environmental Specialist Mark Maritato)

EMISSIONS CONTROL

- Controlling and reducing mercury emissions is a high priority for both the Maine Department of Environmental Protection (MDEP) and for **ecomaine**. In 2000 the mercury emissions limit for waste-to-energy (WTE) facilities was 100 lbs/year (for both boilers combined); in 2004 that limit declined 50 percent to 50 lbs/year, and, as of January 1, 2007, the limit dropped to 35 lbs/year - a reduction of 65 percent in just seven years (Please see chart, below). On January 1, 2010, the law is scheduled to reduce this limit further, to 25 pounds. However, the MDEP has recommended the statute be amended to a limit of "25 pounds per year or 90% reduction." The legislation is currently (as of May 2009) under review in Augusta. (Please see graph on the following page.)
- **ecomaine** continues to be in compliance with its mercury emission limits, as shown in its most recent annual compliance stack test conducted in Fall, 2008. To be in compliance, a facility must emit less than a concentration of 28 ug/dscm or a removal efficiency of 85 percent between inlet and outlet gasses.
- In FY 2008-2009 **ecomaine** undertook three research studies, which produced reports of significance:
 - Feasibility Study on Mercury Control (August 2008)
 - Mercury Reduction Plan (September 2008)
 - Mercury Waste Characterization Report (October 2008)



- **ecomaine** staff provided testimony before the Natural Resources Committee of the Maine Legislature on two occasions: In favor of both “An Act to Enhance Maine’s Electronic Waste Recycling Law” and “An Act to Provide for the Safe Collection and Recycling of Mercury-containing Lighting.”
- In this fiscal year, **ecomaine** environmental staff members received visible emissions training and Hazardous Toxic Waste Management certification.

PUBLIC OUTREACH

- To promote green alternatives, **ecomaine** hosted a sequel to its Green Expo (November 2007): **ecomaine**’s Green Symposium was held at the University of Southern Maine in November 2008. This year the event put more emphasis on workshops and presentations for small businesses and featured a keynote address by Jay Friedlander, former COO of O’Natural’s and current Sharpe-McNally Chair of Green and Socially Responsible Business at College of the Atlantic. An exposition of green products and services remained a strong part of the event, as well.



ecomaine Equipment Operator Scott Ames (left) was one of many employees who helped vendors set up displays.



Jay Friedlander was the keynote speaker at ecomaine’s Green Symposium.

- **ecomaine's** Biodiesel Summit (September 2008) drew more than 50 people from various municipalities interested in learning more about the ecological advantages and disadvantages of a fuel derived from food crops. Two experts with opposing points of view were invited to present their arguments: Joel Glatz, a national energy broker and vice president of Frontier Energy (China, ME), and Daniel Martinez, PhD, who teaches environmental science and policy at the University of Southern Maine. The event was videotaped so that it could be shared with others.



The Biodiesel Summit was very well attended and was videotaped for those who could not attend. (At right: Anne Hewes, environmental manager, listened as the discussion was videotaped.)



- The 2008-2009 eco-Excellence Awards program was expanded to include all green activities, rather than recycling only, and 30 communities provided winning nominations. The scope of participants and activities was both wide and impressive. A description of each has been posted on the **ecomaine** Web site and activities by the recipients were publicized through news releases. More than 90 guests attended the awards presentation that included an announcement that Scarborough's Broadturn Farm was the winner of the Grand Award.



Above: General Manager Kevin Roche (L) and Chairman Tony Plante described winning efforts at the eco-Excellence Awards.



Above (L-R): Recycling Committee Chair Troy Moon, Cumberland winner Lalla Carothers, Cumberland Board Member and nominator Susan McGinty, General Manager Kevin Roche.

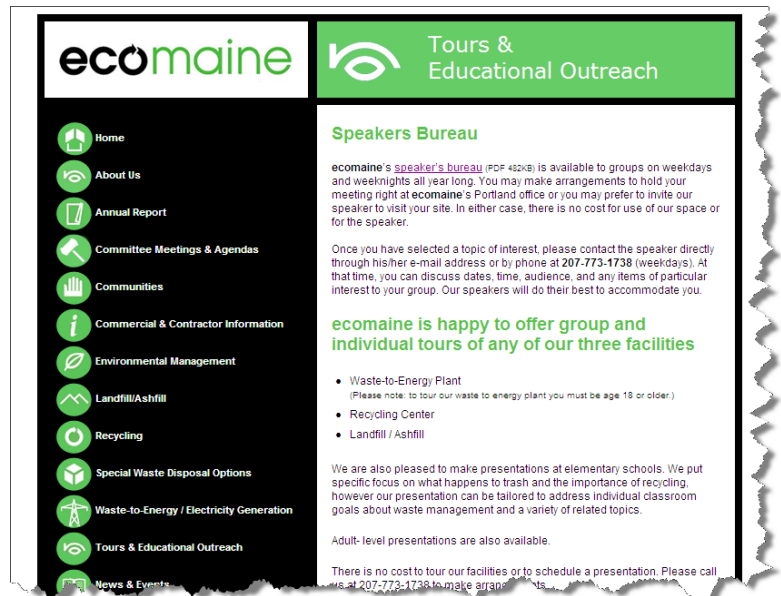
- A brochure was created to explain the significance of the International Organization of Standards 14001 certification earned by all three **ecomaine** operations.

Communications

WEB SITE

- Uses of the **ecomaine** Web site were expanded to include posting of agendas for full board and committee meetings. They are fully accessible by the public, as well as by board members, and typically posted one week before each scheduled meeting.

- An **ecomaine** speakers bureau was created and posted on the Web site. A variety of suggested topics and presentations are described, and each speaker's direct e-mail link is posted. (Please see image, right.)



- The chart of special-waste disposal options and services are posted by municipality; the information is shown in an easy-to-read table. (Please see image, right.)

ecomaine Municipality	Universal Waste						Household Hazardous Waste						Facility Information - Location, Hours, Contact Information
	DEFM / TVs	Refrigerant	Refrigerable Air Units	Car / Boat Batteries	Flammable Liquids	Mercury (Batteries, Thermometers, Fluorescent)	Paints, Solvents and Inks	Gasoline & Antifreeze	Pesticides & Herbicides	Acids	Batteries & Air Conditioning	Pool chemicals	
Standish See vendor disposal options	√	√	√		√	√							Moody Rd. 642-5559 Fri.-Tue. 8am-4pm
Waterboro See options for local vendors that will accept material for disposal on pgs. 6 & 7	√	√	√		√								Waterboro Transfer Station: 747-3440 Wed Noon-7pm Fri & Sat 9am-5pm Sun 1pm-5pm
Windham	#	√	√	#	#	#							Public Works: 892-1509 185 Windham Center Rd.
Yarmouth Haz. Waste: 9/12/09 E-Waste: 5/9 & 11/7 2009	√	√	√	√	√		√	√	√	√	√	√	East Main St. 846-2417 Thu. - Mon. 8:30 4:30pm

√ "Accepted by Town"

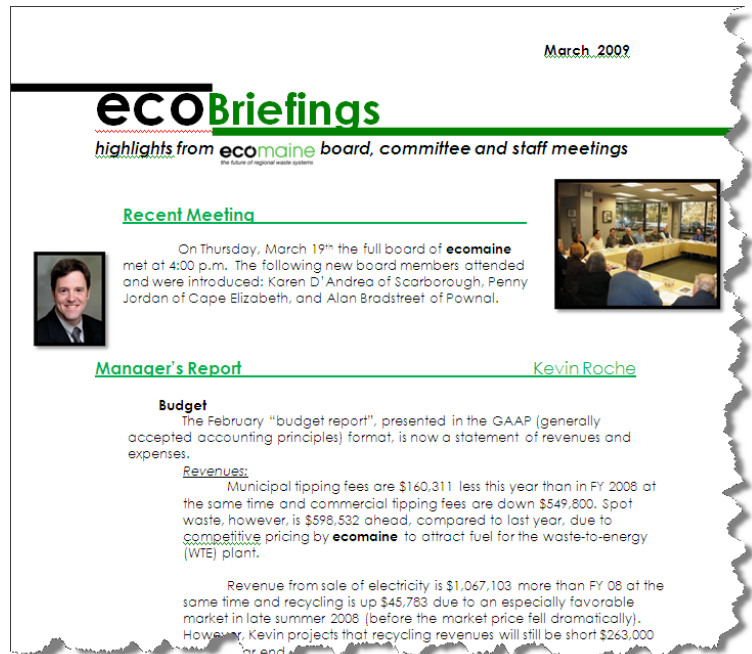
"Universal Waste Items Should be taken to Riverside recycling in Portland or Plan It Recycling in Gorham"

* "Hazardous Waste Items Should be taken to Clean Harbors in South Portland"

@ "Contract with town-approved private hazardous waste hauler"

PUBLICATIONS

- Employees have been kept informed of both problems and progress through a monthly newsletter called "This is **ecomaine**..." In January 2009, the newsletter expanded from a 7" x 8.5" format to a 8.5" x 11" format to accommodate more news and larger photos. Copies of the most recent newsletter are also displayed in the reception area, where they are available to the public.
- Board members and other interested parties have received summaries of meetings and other information in a publication called "Briefings." This publication is primarily distributed by e-mail and usually follows an **ecomaine** executive committee or full board meeting. (Please see sample, right.)
- The Annual Report is offered as a summary of the past fiscal year and a preview of plans for the coming fiscal year. This publication is on display in the reception area and copies are readily available by request all year long.



PUBLIC AWARENESS

- More than 700 people of all ages toured **ecomaine** this fiscal year (projected); in addition, tours were also given after each special event held on site.
- **ecomaine** was both pro-active and responsive to raise public awareness: numerous news releases and articles were initiated and distributed by **ecomaine** on a variety of subjects; it also fielded calls coming from the media with timely responses and accurate information.
- Communications intended to raise public awareness were created for each department within **ecomaine**.



DAVE ALEXANDER SCOTT AMES MIKE BRUCE ED CARON DAVE CHAREST JEFF
CHAREST DAVID COMBS ROLAND COBURN ALLAN DAVIS CHUCK DAVIS BRIAN
DELCAMP JAY DICENTES TONY DICENTES TONY DICKSON RADE DJURANOVIC DIANE
DOANE ERIC DOANE GORAN DOBRIC SPIRO DOBRIC MARK DOLLOFF MIKE DOLLOFF
CHARLIE DUBAIL SHELLEY DUNN ALEX DYER BOB EGAN PAUL GIOBBI PETER
GOUCHER SCOTT GREENLEAF LARRY HARVEY MIKE HARWOOD ANNE HEWES
RODNEY HOWARD MIKE HUNTER CAL JOINER CHRIS JORDAN NATE KEY DICK KING
MATT KING MISSI LABBE CHARLES LEBO TIM MALOY MARK MARITATO STANKO
MARKEZ ALISON McCRADY JOHN MORIN KEVIN MORRISON CEDOMIR NOVKOVIC
JOHN PARDI ALAN PETERSON CHARLES RADLEY TOM RAYMOND RICK ROBINSON
KEVIN ROCHE JOE RODERIGUES RICK ROGHELIA BRUCE SANFORD RYAN ST.PETER
ERIC STEEVES MILORAD STOJANCEVIC PHILIP THOMAS KEN TRUEWORTHY LYNNE
TRUFANT KEVIN TRYTEK MIKE VERRILL RICHARD VINCENT BUD WALDRON BOB
WHEATON ALLISON WHITAKER ROY WOOD DAVE ALEXANDER SCOTT AMES MIKE
BRUCE ED CARON DAVE CHAREST JEFF CHAREST DAVID COMBS ROLAND COBURN
ALLAN DAVIS CHUCK DAVIS BRIAN DELCAMP JAY DICENTES TONY DICENTES TONY
DICKSON RADE DJURANOVIC DIANE DOANE ERIC DOANE GORAN DOBRIC SPIRO
DOBRIC MARK DOLLOFF MIKE DOLLOFF CHARLIE DUBAIL SHELLEY DUNN ALEX DYER
BOB EGAN PAUL GIOBBI PETER GOUCHER SCOTT GREENLEAF LARRY HARVEY MIKE
HARWOOD ANNE HEWES RODNEY HOWARD MIKE HUNTER CAL JOINER CHRIS
JORDAN NATE KEY DICK KING MATT KING MISSI LABBE CHARLES LEBO TIM MALOY
MARK MARITATO STANKO MARKEZ ALISON McCRADY JOHN MORIN KEVIN
MORRISON CEDOMIR NOVKOVIC JOHN PARDI ALAN PETERSON CHARLES RADLEY
TOM RAYMOND RICK ROBINSON KEVIN ROCHE JOE RODERIGUES RICK ROGHELIA
BRUCE SANFORD RYAN ST.PETER ERIC STEEVES MILORAD STOJANCEVIC PHILIP
THOMAS KEN TRUEWORTHY LYNNE TRUFANT KEVIN TRYTEK MIKE VERRILL
RICHARD VINCENT BUD WALDRON BOB WHEATON ALLISON WHITAKER ROY WOOD

ecomaine

64 Blueberry Road
Portland, ME 04102

207-773-1738

www.ecomaine.org