

STANDISH

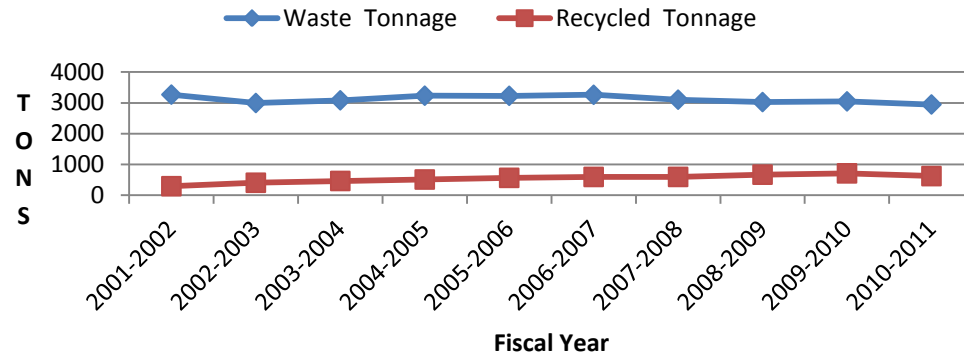
ANNUALLY

Fiscal Year

Totals

	Waste Tonnage	Recycled Tonnage	Percent Recycled
2001-2002	3268	293	8%
2002-2003	2996	406	12%
2003-2004	3083	464	13%
2004-2005	3233	511	13%
2005-2006	3229	565	14%
2006-2007	3262	594	15%
2007-2008	3104	595	16%
2008-2009	3026	669	18%
2009-2010	3048	711	19%
2010-2011	2948	622	17%

Standish: Tonnage



MONTHLY

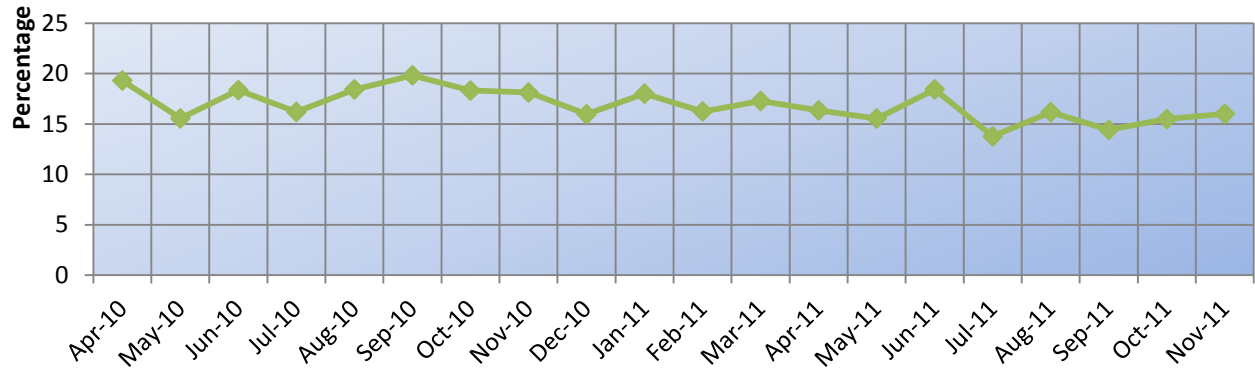
FY 2009-10

Month

% Recycled

Apr-10	19.31
May-10	15.55
Jun-10	18.35
Jul-10	16.19
Aug-10	18.43
Sep-10	19.82
Oct-10	18.31
Nov-10	18.12
Dec-10	15.96
Jan-11	18.01
Feb-11	16.24
Mar-11	17.27
Apr-11	16.34
May-11	15.54
Jun-11	18.43
Jul-11	13.77
Aug-11	16.17
Sep-11	14.41
Oct-11	15.48
Nov-11	16

Standish: Percent Recycled



Figures shown are approximate.