



SUSTAINABLE FOOD WASTE MANAGEMENT THROUGH THE *FOOD RECOVERY CHALLENGE*

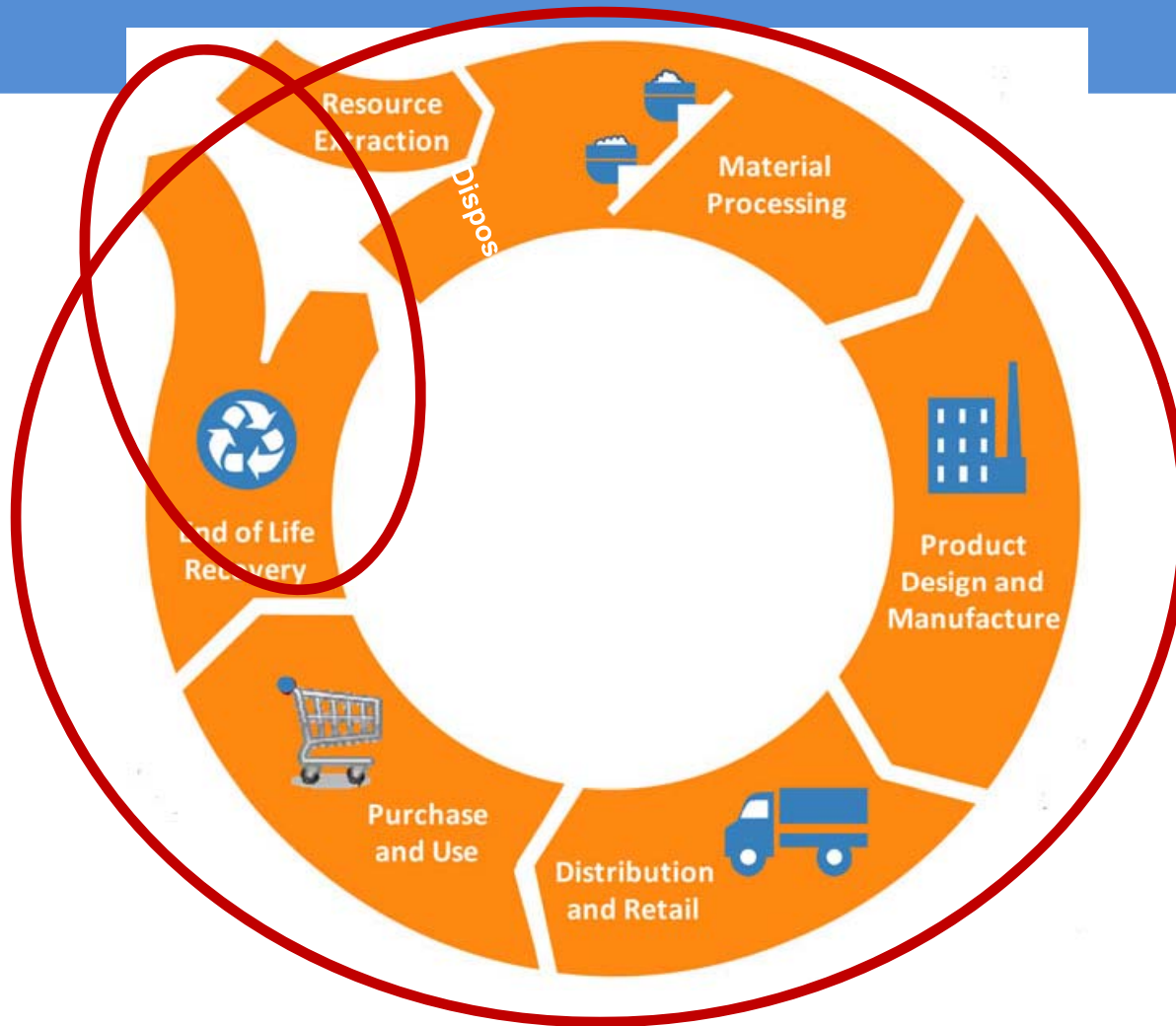
JUNE 14, 2013
SWANA TECHNICAL SESSION

CHRISTINE BELING - U.S. EPA-NEW ENGLAND



www.epa.gov/foodrecoverychallenge

WASTE vs. MATERIALS Management

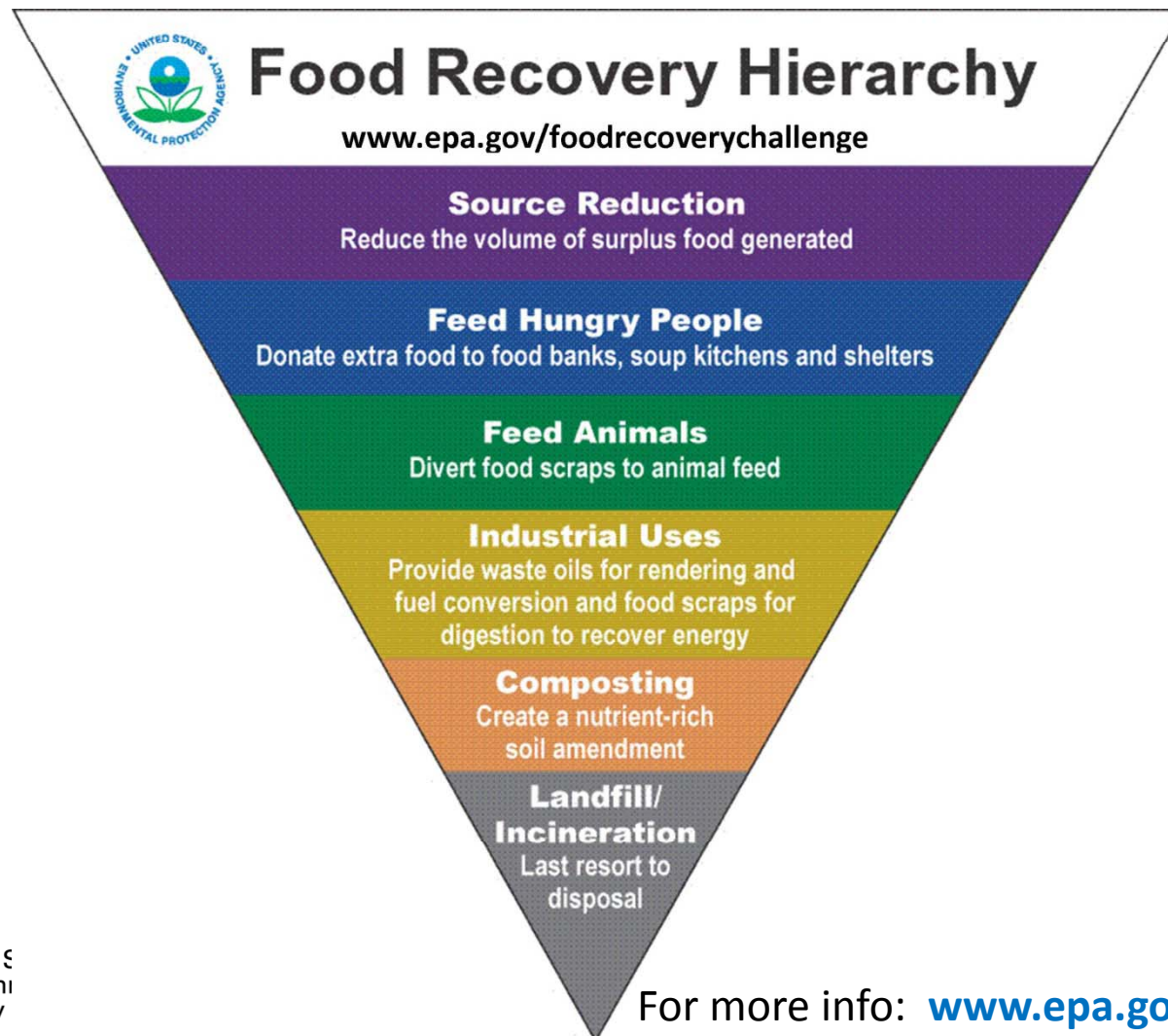


Materials Management: A Working Definition

“Materials management is an approach to using and reusing resources most efficiently and sustainably throughout their lifecycles. It seeks to minimize materials used and all associated environmental impacts.”

- From EPA, [Opportunities to Reduce Greenhouse Gas Emissions through Materials and Land Management Practices \(PDF\)](#) (98pp, 1.5MB)

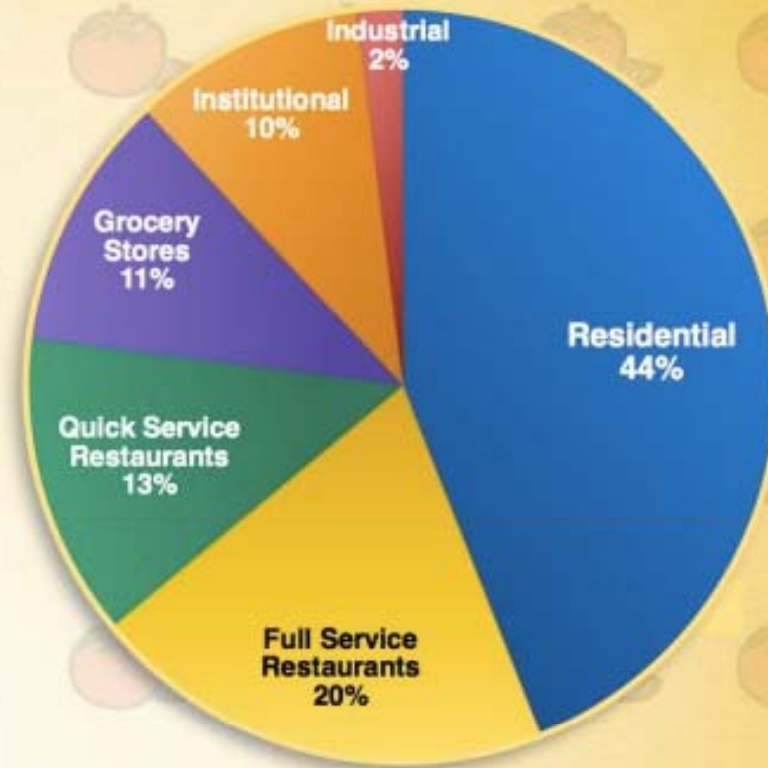
So how can you reduce your food waste and save money?



20% - 40%
of all food
grown and
processed

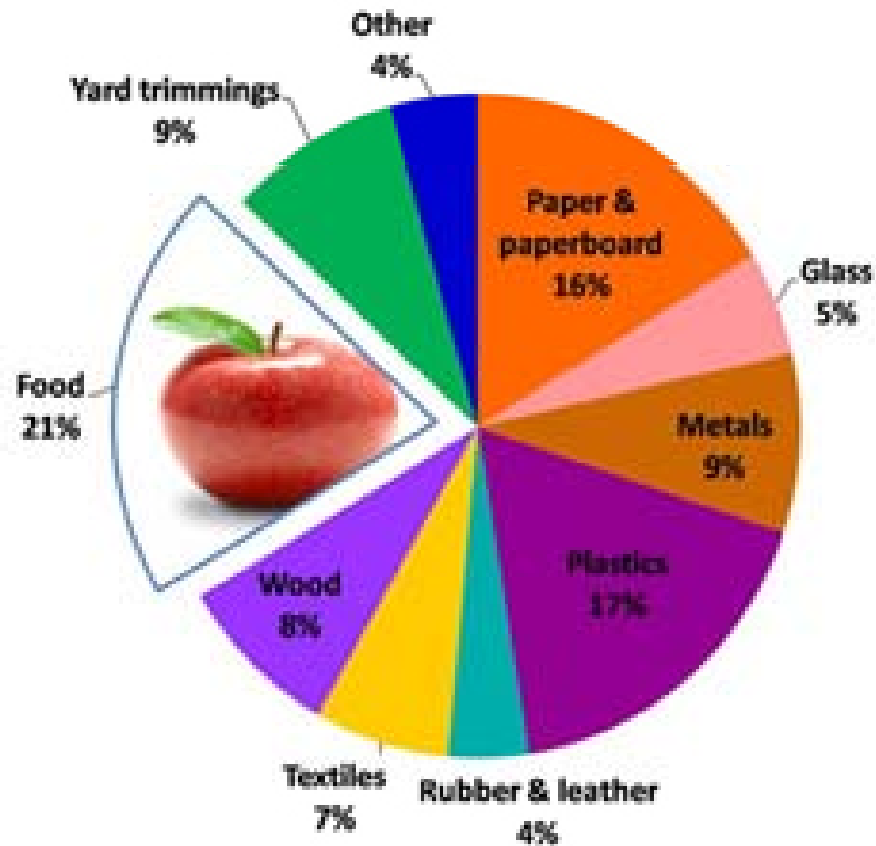


US Food Waste Disposal Data



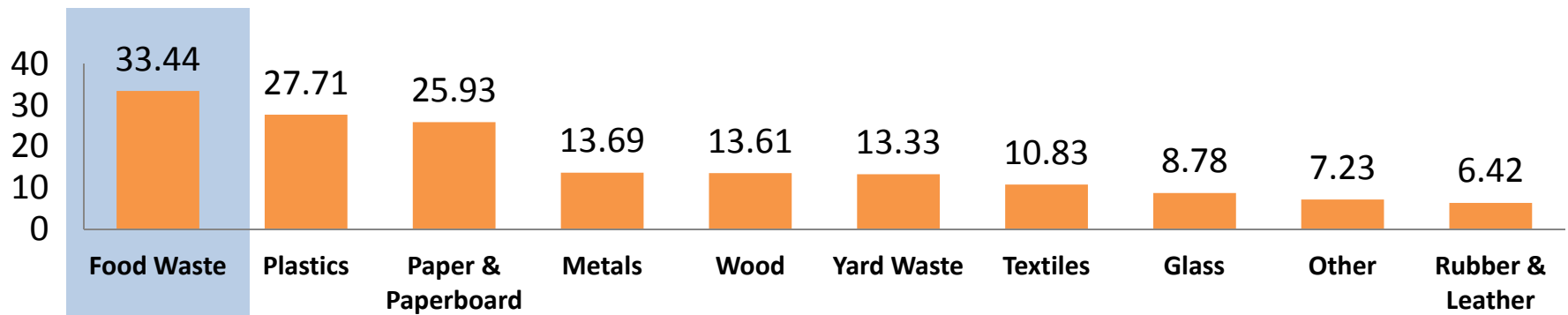
Source: Sustainable Food Waste Symposium, 2012_

Municipal Solid Waste Disposed, in U.S. 2010

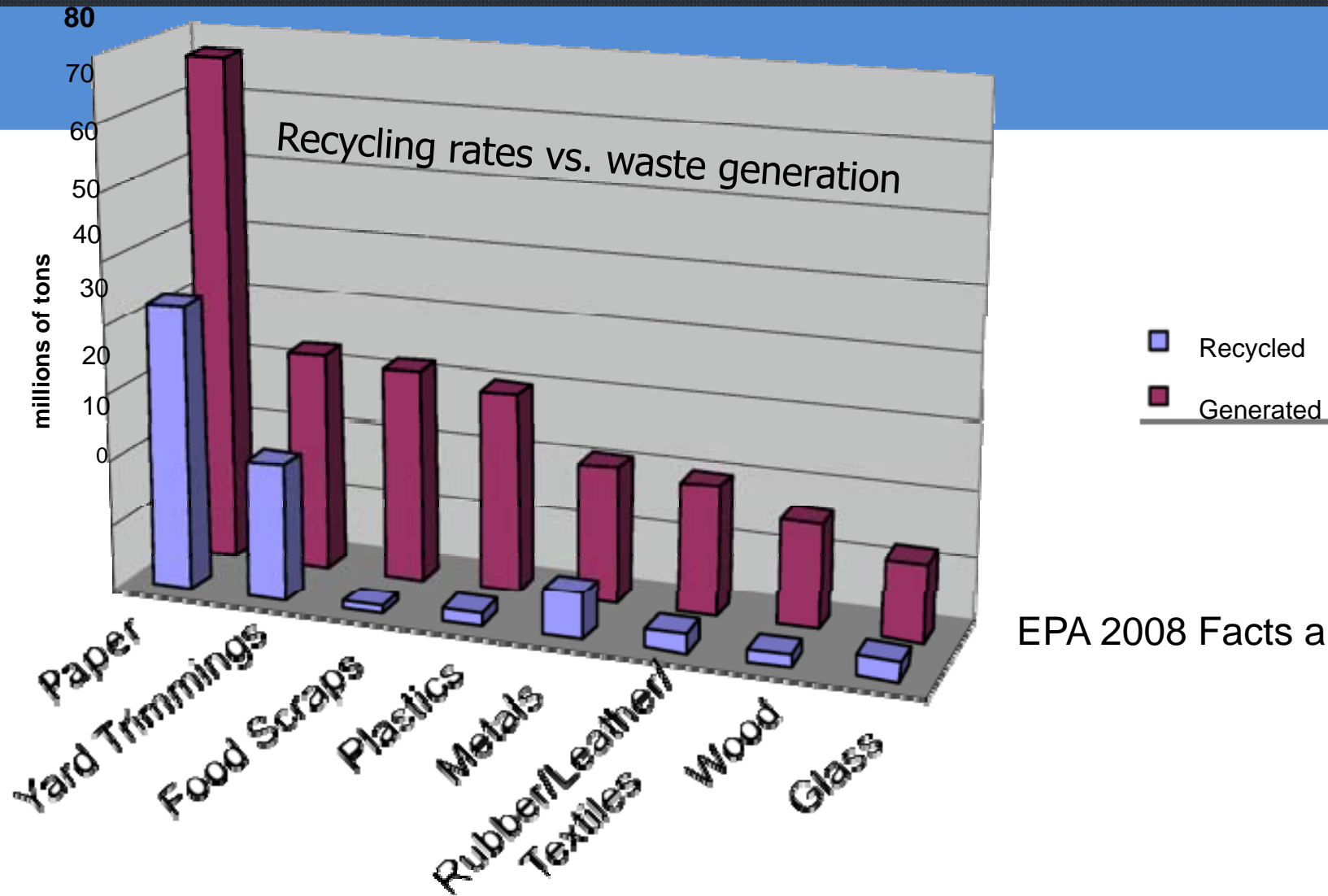


So how much food are we throwing away every year?

- **In total, just under 34 million tons** of food waste was disposed of in landfills/incinerators in 2009 (14% of the country's total waste stream)
- **Less than 3%** of food waste was recovered for recycling (composting) in 2009 (EPA, 2010)



Recycling vs. Waste Generation



EPA 2008 Facts and Figures

Food waste is a problem because it impacts the economy.

- Financially, wasted food costs America **more than \$100 billion** annually (Bloom, 2007)
 - Disposal cost of municipal waste management
 - Over purchasing costs
 - Cost of lost energy

It impacts society.

- **50 million Americans**, or 14% of American households, were food insecure in 2009 (USDA).
- Food insecurity can increase the likelihood for an individual to have **major health concerns**.



It impacts the environment.

- Food that enters a landfill produces methane, a greenhouse gas with **21 times** the warming potential of CO₂
- Food production impacts **water quality, soil productivity, and contributes to about 13% of the nation's greenhouse gas emissions.**



Government Actions

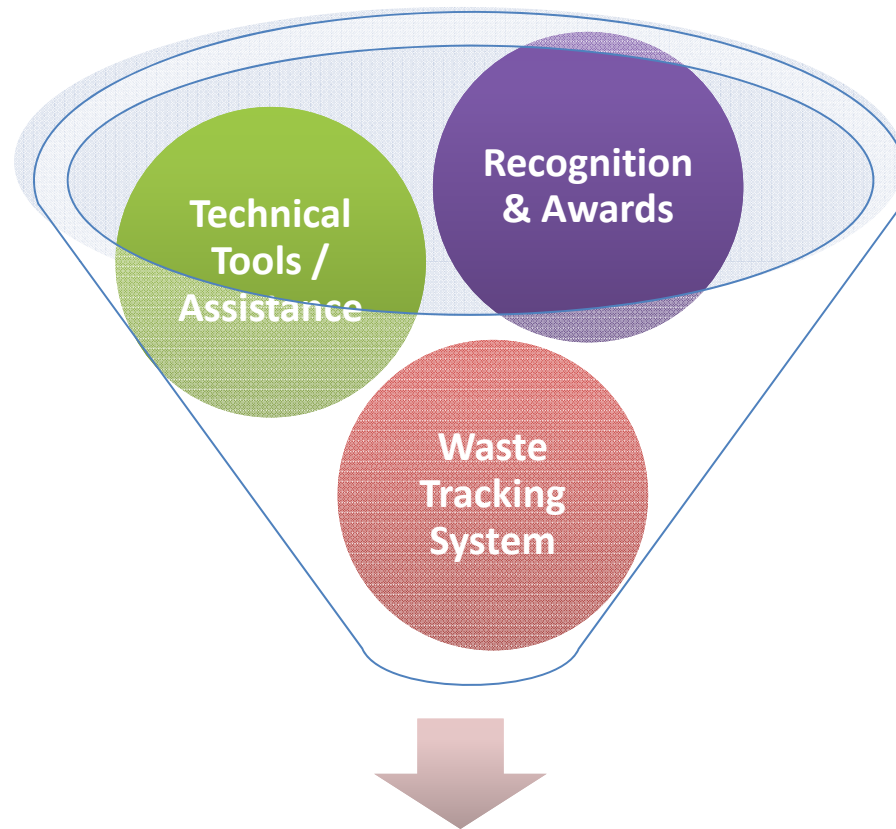


**EPA's Food Recovery
Challenge**

**Mass WasteWise
Program**

**USDA US Food Waste
Challenge**

EPA's *Food Recovery Challenge* (FRC)



Cost Savings and Brand Recognition
Supporting Your Community
Reducing Environmental Impact

The FRC is a great tool to help you reduce your food waste.

- ✓ The FRC is a FREE, simple tool.
- ✓ You'll receive free technical assistance from regional EPA staff.
- ✓ Standardized metrics allow for easy data tracking & comparison (internally & externally).
- ✓ Opportunity to learn about best management practices.
- ✓ Be recognized for your innovative work on food waste reduction & recovery.

What We Can Do For You...

- EPA tools and technical assistance
 - [WasteWise Tool](#) *Re-TRAC* for tracking waste
 - Personalized annual progress report with Climate Profile
 - Other EPA Tools
 - [Food Waste Management Calculator](#)
 - Food Waste Source Reduction Auditing Tool
 - Regular webinars on food waste related issues
 - Clearinghouse for case studies, tools, templates, BMPs, and outreach materials

Re-TRAC thru WasteWise

- **What WasteWise Re-TRAC does:**
- Compiles and analyzes your waste management data and maintains historical files.
- **Submits your annual data to the WasteWise program with a click.**
- Generates instant reports on program performance and trends, and calculates GHG emission reductions associated with your activities.
- **Provides your official EPA Climate Profile report on an annual basis.**



"The new Re-TRAC system is beyond fabulous. It really improves the data entering experience. Thank you, thank you, thank you!!!!" - Mariah Titlow Tinger, Senior Environmental Program Coordinator, Genzyme Corporation

EPA Food: Too Good to Waste Toolkit

The complete toolkit and research reports can be downloaded from our FTP site at:

[http://bit.ly/FoodToo Good To Waste](http://bit.ly/FoodTooGoodToWaste)



What We Can Do For You...

- Recognition
 - Website
 - Awards
 - Case Studies



What's In It For You?

- ✓ Reduce your costs
- ✓ Improve your image
- ✓ Feed your communities
- ✓ Protect your environment.

Join Now!

And... take a bite out of food waste!

<http://www.epa.gov/foodrecoverychallenge>

Four Easy Steps!

1. **Assess It!** Conduct baseline food waste assessment
2. **Commit to It!** Set a goal.
3. **Do It!** Undertake food waste reduction and recovery activities to meet your goals!
4. **Track It!** Report annually using WasteWise tool

Participants November 2011

Thank You!

C/U- Food Recovery Challenge Partners

- US Coast Guard Academy
- MIT
- Harvard University
- Clark University



Participants June 2013

C/U- Food Recovery Challenge Partners

- Assumption College/SODEXO
- Bates College
- Bentley University
- Boston College
- Clark University
- College of the Atlantic
- College of the Holy Cross
- Harvard University
- Johnson & Wales University
- Johnson State College/SODEXO
- Keene State College
- Lesley University
- Lyndon State College/SODEXO
- Middlebury College
- MIT
- Northeastern University
- Plymouth State University/SODEXO
- Roger Williams University
- Salem State University
- Suffolk University
- Tufts University
- UCONN
- UMASS Amherst
- UMASS Dartmouth
- University of New Hampshire
- University of Maine – Farmington
- University of Maine – Orono
- University of Southern Maine
- US Coast Guard Academy
- VT Technical College
- Wellesley college
- Wesleyan University
- Westfield State University/SODEXO
- Worcester state university

Contact Information



Christine Beling
beling.christine@epa.gov
(617) 918-1792

Janet Bowen
bowen.janet@epa.gov
(617) 918-1795

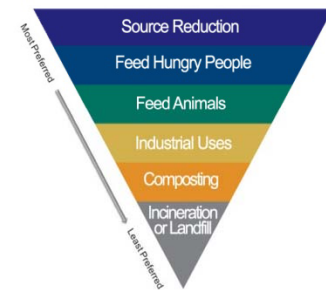
<http://www.epa.gov/foodrecoverychallenge>



**TOO GOOD
TO WASTE**



Food Recovery Hierarchy



Sustainable Materials Management

Food Recovery Challenge



CHANGING HOW WE THINK ABOUT OUR RESOURCES FOR A BETTER TOMORROW



Details for Joining the FRC

1. **Join Waste Wise and the Food Recovery Challenge** at <http://www.epa.gov/osw/partnerships/wastewise/join.htm>
 - Make sure to choose Food Recovery Challenge when you join
2. **Conduct baseline food waste assessment** within 90 days of joining
 - Done using the WasteWise Tool (<http://www.epa.gov/osw/partnerships/wastewise/retrac.htm>)
3. **Set a goal** for reducing the amount of food waste reaching landfills.
 - Year One: Commit to at least one of the three food diversion categories ([prevention](#), [donation](#), and [composting](#)). If you have no data from a previous year for a category, partners may select a site-specific goal.
4. **Report annually**
 - Done using the WasteWise Tool
5. **Get Recognized!**
 - Annual awards for outstanding participants